

SN74LV4052A-Q1 Dual 4-Channel Analog Multiplexers and Demultiplexers

1 Features

- Qualified for Automotive Applications
- AEC-Q100 Qualified With the Following Results:
 - Device Temperature Grade 1: –40°C to +125°C Ambient Operating Temperature Range
 - Device HBM ESD Classification Level 2
 - Device CDM ESD Classification Level C4B
- Supports Mixed-Mode Voltage Operation on All Ports
- Fast Switching
- High On-Off Output-Voltage Ratio
- Low Crosstalk Between Switches
- Extremely Low Input Current

2 Applications

- Automotive:
 - Signal Gating
 - Chopping
 - Modulation or Demodulation (Modem)
 - Signal Multiplexing for Analog-to-Digital and Digital-to-Analog Conversion Systems

3 Description

These dual 4-channel CMOS analog multiplexers and demultiplexers are designed for 2-V to 5.5-V V_{CC} operation.

The SN74LV4052A-Q1 devices handle both analog and digital signals. Each channel permits signals with amplitudes up to 5.5 V (peak).

Applications include signal gating, chopping, modulation or demodulation (modem), and signal multiplexing for analog-to-digital and digital-to-analog conversion systems.

Device Information⁽¹⁾

| PART NUMBER | PACKAGE | BODY SIZE (NOM) |
|----------------|------------|-------------------|
| SN74LV4052A-Q1 | TSSOP (16) | 5.00 mm x 4.40 mm |
| | SOIC (16) | 9.90 mm x 3.91 mm |

(1) For all available packages, see the orderable addendum at the end of the datasheet.

Logic Diagram (Positive Logic)

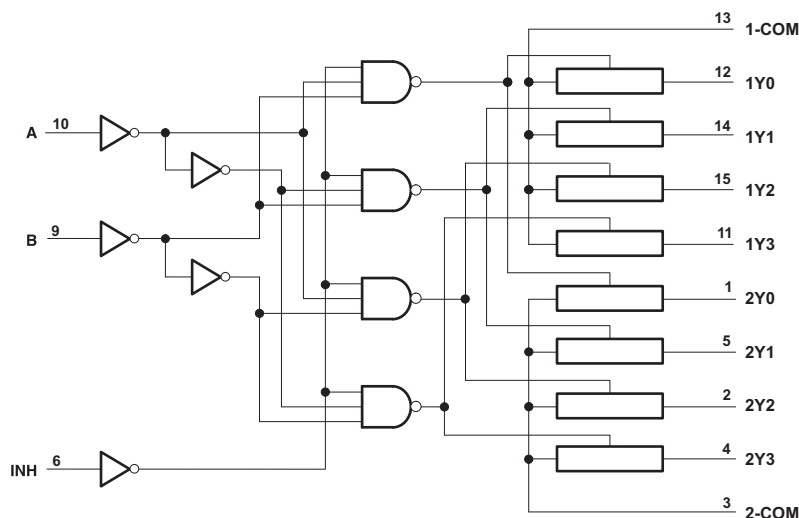


Table of Contents

| | | | |
|--|-----------|--|-----------|
| 1 Features | 1 | 8.1 Overview | 11 |
| 2 Applications | 1 | 8.2 Functional Block Diagram | 11 |
| 3 Description | 1 | 8.3 Feature Description | 11 |
| 4 Revision History | 2 | 8.4 Device Functional Modes | 11 |
| 5 Pin Configuration and Functions | 3 | 9 Application and Implementation | 12 |
| 6 Specifications | 4 | 9.1 Application Information | 12 |
| 6.1 Absolute Maximum Ratings | 4 | 9.2 Typical Application | 12 |
| 6.2 ESD Ratings | 4 | 10 Power Supply Recommendations | 13 |
| 6.3 Recommended Operating Conditions | 4 | 11 Layout | 13 |
| 6.4 Thermal Information | 5 | 11.1 Layout Guidelines | 13 |
| 6.5 Operating Characteristics | 5 | 11.2 Layout Example | 13 |
| 6.6 Electrical Characteristics | 5 | 12 Device and Documentation Support | 14 |
| 6.7 Switching Characteristics $V_{CC} = 3.3\text{ V} \pm 0.3\text{ V}$ | 5 | 12.1 Trademarks | 14 |
| 6.8 Switching Characteristics $V_{CC} = 5\text{ V} \pm 0.5\text{ V}$ | 6 | 12.2 Electrostatic Discharge Caution | 14 |
| 6.9 Analog Switch Characteristics | 6 | 12.3 Glossary | 14 |
| 7 Parameter Measurement Information | 7 | 13 Mechanical, Packaging, and Orderable Information | 14 |
| 8 Detailed Description | 11 | | |

4 Revision History

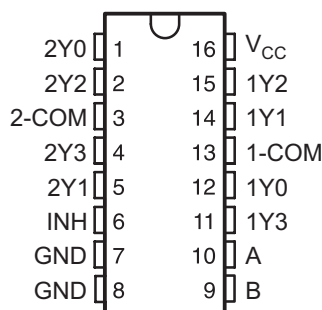
NOTE: Page numbers for previous revisions may differ from page numbers in the current version.

| Changes from Revision E (November 2012) to Revision F | Page |
|---|------|
| <ul style="list-style-type: none"> Added <i>ESD Ratings</i> table, <i>Feature Description</i> section, <i>Device Functional Modes</i>, <i>Application and Implementation</i> section, <i>Power Supply Recommendations</i> section, <i>Layout</i> section, <i>Device and Documentation Support</i> section, and <i>Mechanical, Packaging, and Orderable Information</i> section | 4 |

| Changes from Revision D (June 2011) to Revision E | Page |
|---|--------------|
| <ul style="list-style-type: none"> Deleted θ_{JA} row from Absolute Maximum Ratings table Added Thermal Information table Corrected second row of Function Table | 4 5 11 |

5 Pin Configuration and Functions

**D OR PW PACKAGE
(TOP VIEW)**



Pin Functions

| PIN | | I/O ⁽¹⁾ | DESCRIPTION |
|-----|-------|--------------------|---|
| NO. | NAME | | |
| 1 | 2Y0 | I ⁽¹⁾ | Input to mux 2 |
| 2 | 2Y2 | I ⁽¹⁾ | Input to mux 2 |
| 3 | 2-COM | O ⁽¹⁾ | Output of mux 2 |
| 4 | 2Y3 | I ⁽¹⁾ | Input to mux 2 |
| 5 | 2Y1 | I ⁽¹⁾ | Input to mux 2 |
| 6 | INH | I | Enables the outputs of the device. Logic low level will turn the outputs on, high level will turn them off. |
| 7 | GND | - | Ground |
| 8 | GND | - | Ground |
| 9 | B | I | Selector line for outputs (see Device Functional Modes for specific information) |
| 10 | A | I | Selector line for outputs (see Device Functional Modes for specific information) |
| 11 | 1Y3 | I ⁽¹⁾ | Input to mux 1 |
| 12 | 1Y0 | I ⁽¹⁾ | Input to mux 1 |
| 13 | 1-COM | O ⁽¹⁾ | Output of mux 1 |
| 14 | 1Y1 | I ⁽¹⁾ | Input to mux 1 |
| 15 | 1Y2 | I ⁽¹⁾ | Input to mux 1 |
| 16 | Vcc | I | Device power input |

(1) These I/O descriptions represent the device when used as a multiplexer, when this device is operated as a demultiplexer pins 1Y0, 1Y1, 1Y2, 1Y3, 2Y0, 2Y1, 2Y2, 2Y3 may be considered outputs (O) and pins 1-COM and 2-COM may be considered inputs (I).

6 Specifications

6.1 Absolute Maximum Ratings⁽¹⁾

over operating free-air temperature range (unless otherwise noted)

| | | MIN | MAX | UNIT |
|-----------|---|--------------------------|----------------|------|
| V_{CC} | Supply voltage range | −0.5 | 7 | V |
| V_I | Input voltage range ⁽²⁾ | −0.5 | 7 | |
| V_{IO} | Switch I/O voltage range ^{(2) (3)} | −0.5 | $V_{CC} + 0.5$ | |
| I_{IK} | Input clamp current | $V_I < 0$ | −20 | mA |
| I_{IOK} | I/O diode current | $V_{IO} < 0$ | −50 | |
| I_T | Switch through current | $V_{IO} = 0$ to V_{CC} | ±25 | |
| | Continuous current through V_{CC} or GND | | ±50 | |
| T_{stg} | Storage temperature range | −65 | 150 | °C |

- (1) Stresses beyond those listed under *Absolute Maximum Ratings* may cause permanent damage to the device. These are stress ratings only, and functional operation of the device at these or any other conditions beyond those indicated under *Recommended Operating Conditions* is not implied. Exposure to absolute-maximum-rated conditions for extended periods may affect device reliability.
- (2) The input and output negative-voltage ratings may be exceeded if the input and output current ratings are observed.
- (3) The maximum limit for this value is 5.5 V.

6.2 ESD Ratings

| | | | VALUE | UNIT |
|--------------------|-------------------------|---|-------|------|
| V _(ESD) | Electrostatic discharge | Human body model (HBM), per AEC Q100-002 ⁽¹⁾ | ±2000 | V |
| | | Charged device model (CDM), per AEC Q100-011 | ±750 | |
| | | Other pins | ±500 | |

- (1) AEC Q100-002 indicates HBM stressing is done in accordance with the ANSI/ESDA/JEDEC JS-001 specification.

6.3 Recommended Operating Conditions⁽¹⁾

| | | MIN | NOM | MAX | UNIT |
|---------------------|--|---------------------------|---------------------|---------------------|------|
| V_{CC} | Supply voltage | 2 ⁽²⁾ | | 5.5 | V |
| V_{IH} | High-level input voltage, control inputs | $V_{CC} = 2$ V | 1.5 | | V |
| | | $V_{CC} = 2.3$ V to 2.7 V | $V_{CC} \times 0.7$ | | |
| | | $V_{CC} = 3$ V to 3.6 V | $V_{CC} \times 0.7$ | | |
| | | $V_{CC} = 4.5$ V to 5.5 V | $V_{CC} \times 0.7$ | | |
| V_{IL} | Low-level input voltage, control inputs | $V_{CC} = 2$ V | | 0.5 | V |
| | | $V_{CC} = 2.3$ V to 2.7 V | | $V_{CC} \times 0.3$ | |
| | | $V_{CC} = 3$ V to 3.6 V | | $V_{CC} \times 0.3$ | |
| | | $V_{CC} = 4.5$ V to 5.5 V | | $V_{CC} \times 0.3$ | |
| V_I | Control input voltage | 0 | | 5.5 | V |
| V_{IO} | Input/output voltage | 0 | | V_{CC} | V |
| $\Delta t/\Delta v$ | Input transition rise or fall rate | $V_{CC} = 2.3$ V to 2.7 V | | 200 | ns/V |
| | | $V_{CC} = 3$ V to 3.6 V | | 100 | |
| | | $V_{CC} = 4.5$ V to 5.5 V | | 20 | |
| T_A | Operating free-air temperature | −40 | | 105 | °C |
| T_A | Operating free-air temperature | −40 | | 125 | |

- (1) Hold all unused inputs of the device at V_{CC} or GND to ensure proper device operation. See the TI application report, *Implications of Slow or Floating CMOS Inputs*, literature number [SCBA004](#).
- (2) With supply voltages at or near 2 V, the analog switch on-state resistance becomes very nonlinear. TI recommends transmitting only digital signals at these low supply voltages.

6.4 Thermal Information

| THERMAL METRIC | | SN74LV4052A-Q1 | | UNIT |
|----------------------|--|----------------|---------|------|
| | | D | PW | |
| | | 16 PINS | 16 PINS | |
| $R_{\theta JA}$ | Junction-to-ambient thermal resistance | 85.9 | 113.3 | °C/W |
| $R_{\theta JC(top)}$ | Junction-to-case (top) thermal resistance | 44.6 | 48.1 | °C/W |
| $R_{\theta JB}$ | Junction-to-board thermal resistance | 43.4 | 58.4 | °C/W |
| Ψ_{JT} | Junction-to-top characterization parameter | 13.4 | 6.2 | °C/W |
| Ψ_{JB} | Junction-to-board characterization parameter | 43.1 | 57.8 | °C/W |

6.5 Operating Characteristics

 $V_{CC} = 3.3\text{ V}$, $T_A = 25^\circ\text{C}$ (unless otherwise noted)

| PARAMETER | TEST CONDITIONS | TYP | UNIT |
|--|--|------|------|
| C_{pd} Power dissipation capacitance | $C_L = 50\text{ pF}$, $f = 10\text{ MHz}$ | 11.8 | pF |

6.6 Electrical Characteristics

over recommended operating free-air temperature range (unless otherwise noted)

| PARAMETER | TEST CONDITIONS | V_{CC} | $T_A = -40\text{ to }105^\circ\text{C}$ | | | $T_A = -40\text{ to }125^\circ\text{C}$ | | | UNIT |
|--|---|-----------------------|---|-----|-------------------|---|-----|-------------------|---------------|
| | | | MIN | TYP | MAX | MIN | TYP | MAX | |
| r_{on} On-state switch resistance | $I_T = 2\text{ mA}$, $V_I = V_{CC}$ or GND, $V_{INH} = V_{IL}$ (see Figure 1) | 2.3 V 3 V 4.5 V | | | 225 190 100 | | | 225 190 100 | Ω |
| $r_{on(p)}$ Peak on-state resistance | $I_T = 2\text{ mA}$, $V_I = V_{CC}$ or GND, $V_{INH} = V_{IL}$ | 2.3 V 3 V 4.5 V | | | 600 225 125 | | | 600 225 125 | Ω |
| Δr_{on} Difference in on-state resistance between switch | $I_T = 2\text{ mA}$, $V_I = V_{CC}$ or GND, $V_{INH} = V_{IL}$ | 2.3 V 3 V 4.5 V | | | 40 30 20 | | | 40 30 20 | Ω |
| I_I Control input current | $V_I = 5.5\text{ V}$ or GND | 0 V to 5.5 V | | | ± 1 | | | ± 2 | μA |
| $I_{S(of)}$ Off-state switch leakage current | $V_I = V_{CC}$ and $V_O = \text{GND}$, or $V_I = \text{GND}$ and $V_O = V_{CC}$, $V_{INH} = V_{IH}$ (see Figure 2) | 5.5 V | | | ± 1 | | | ± 2 | μA |
| $I_{S(on)}$ On-state switch leakage current | $V_I = V_{CC}$ or GND, $V_{INH} = V_{IL}$ (see Figure 3) | 5.5 V | | | ± 1 | | | ± 2 | μA |
| I_{CC} Supply current | $V_I = V_{CC}$ or GND | 5.5 V | | | 20 | | | 40 | μA |

6.7 Switching Characteristics $V_{CC} = 3.3\text{ V} \pm 0.3\text{ V}$

over recommended operating free-air temperature range (unless otherwise noted)

| PARAMETER | FROM (INPUT) | TO (OUTPUT) | TEST CONDITIONS | $T_A = -40\text{ to }105^\circ\text{C}$ | | | $T_A = -40\text{ to }125^\circ\text{C}$ | | | UNIT |
|----------------------------------|--------------|-------------|--|---|-----|-----|---|-----|-----|------|
| | | | | MIN | TYP | MAX | MIN | TYP | MAX | |
| t_{PLH} Propagation delay time | COM or Y | Y or COM | $C_L = 50\text{ pF}$ (see Figure 4) | | | 12 | | | 14 | ns |
| t_{PZH} Enable delay time | INH | COM or Y | $C_L = 50\text{ pF}$ (see Figure 5) | | | 25 | | | 25 | ns |
| t_{PHZ} Disable delay time | INH | COM or Y | $C_L = 50\text{ pF}$ (see Figure 5) | | | 25 | | | 25 | ns |

SN74LV4052A-Q1

SCLS469F – MARCH 2003–REVISED DECEMBER 2014

www.ti.com

6.8 Switching Characteristics $V_{CC} = 5\text{ V} \pm 0.5\text{ V}$

over recommended operating free-air temperature range (unless otherwise noted)

| PARAMETER | FROM (INPUT) | TO (OUTPUT) | TEST CONDITIONS | $T_A = -40\text{ to }105^\circ\text{C}$ | | | $T_A = -40\text{ to }125^\circ\text{C}$ | | | UNIT |
|--|--------------|-------------|--|---|-----|-----|---|-----|-----|------|
| | | | | MIN | TYP | MAX | MIN | TYP | MAX | |
| t_{PLH} t_{PHL} Propagation delay time | COM or Y | Y or COM | $C_L = 50\text{ pF}$ (see Figure 4) | | | 8 | | | 10 | ns |
| t_{PZH} t_{PZL} Enable delay time | INH | COM or Y | $C_L = 50\text{ pF}$ (see Figure 5) | | | 18 | | | 18 | ns |
| t_{PHZ} t_{PLZ} Disable delay time | INH | COM or Y | $C_L = 50\text{ pF}$ (see Figure 5) | | | 18 | | | 18 | ns |

6.9 Analog Switch Characteristics

over recommended operating free-air temperature range (unless otherwise noted)

| PARAMETER | FROM (INPUT) | TO (OUTPUT) | TEST CONDITIONS | V_{CC} | $T_A = 25^\circ\text{C}$ | | | UNIT |
|--|--------------|-------------|---|-------------------------|--------------------------|-----|------|------|
| | | | | | MIN | TYP | MAX | |
| Frequency response (switch on) | COM or Y | Y or COM | $C_L = 50\text{ pF}$, $R_L = 600\ \Omega$, $f_{in} = 1\text{ MHz}$ (sine wave) ⁽¹⁾ (see Figure 6) | 2.3 V | | 30 | | MHz |
| | | | | 3 V | | 35 | | |
| | | | | 4.5 V | | 50 | | |
| Crosstalk (between any switches) | COM or Y | Y or COM | $C_L = 50\text{ pF}$, $R_L = 600\ \Omega$, $f_{in} = 1\text{ MHz}$ (sine wave) (see Figure 7) | 2.3 V | | –45 | | dB |
| | | | | 3 V | | –45 | | |
| | | | | 4.5 V | | –45 | | |
| Crosstalk (control input to signal output) | INH | COM or Y | $C_L = 50\text{ pF}$, $R_L = 600\ \Omega$, $f_{in} = 1\text{ MHz}$ (square wave) (see Figure 8) | 2.3 V | | 20 | | mV |
| | | | | 3 V | | 35 | | |
| | | | | 4.5 V | | 65 | | |
| Feedthrough attenuation (switch off) | COM or Y | Y or COM | $C_L = 50\text{ pF}$, $R_L = 600\ \Omega$, $f_{in} = 1\text{ MHz}$ ⁽²⁾ (see Figure 9) | 2.3 V | | –45 | | dB |
| | | | | 3 V | | –45 | | |
| | | | | 4.5 V | | –45 | | |
| Sine-wave distortion | COM or Y | Y or COM | $C_L = 50\text{ pF}$, $R_L = 10\text{ k}\Omega$, $f_{in} = 1\text{ kHz}$ (sine wave) (see Figure 10) | $V_I = 2\text{ Vp-p}$ | 2.3 V | | 0.1% | |
| | | | | $V_I = 2.5\text{ Vp-p}$ | 3 V | | 0.1% | |
| | | | | $V_I = 4\text{ Vp-p}$ | 4.5 V | | 0.1% | |

(1) Adjust f_{in} voltage to obtain 0-dBm output. Increase fin frequency until dB meter reads –3 dB.

(2) Adjust f_{in} voltage to obtain 0-dBm input.

7 Parameter Measurement Information

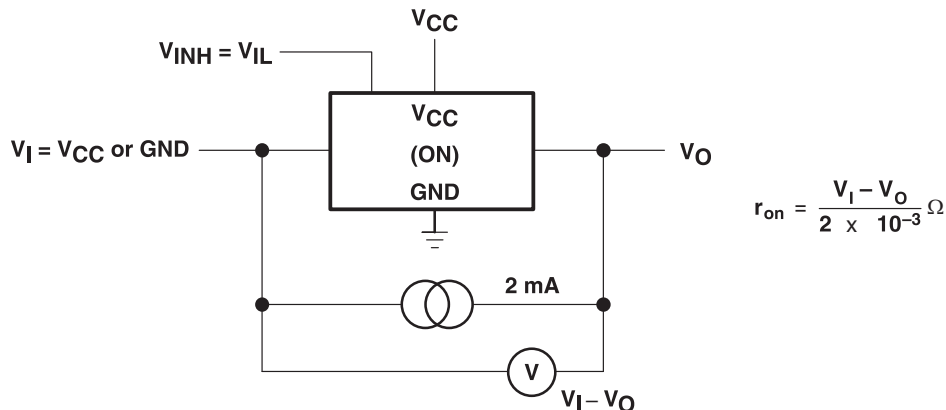
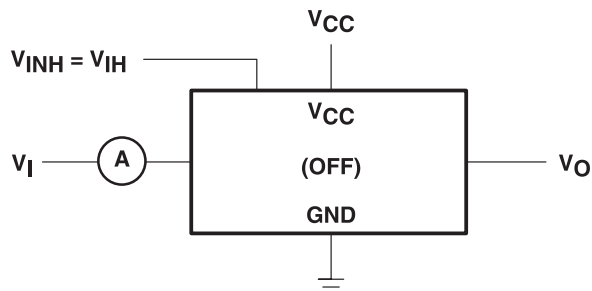


Figure 1. On-State Resistance Test Circuit



Condition 1: $V_I = 0$, $V_O = V_{CC}$
Condition 2: $V_I = V_{CC}$, $V_O = 0$

Figure 2. Off-State Switch Leakage-Current Test Circuit

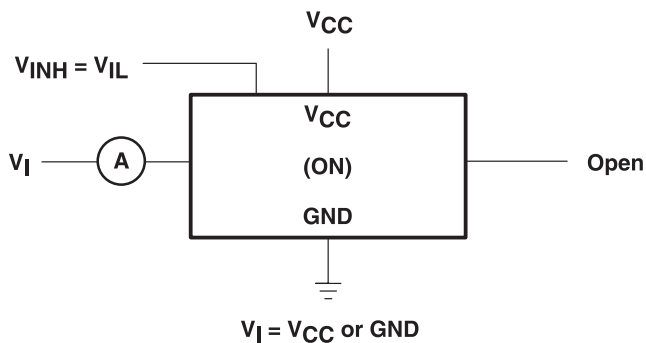


Figure 3. On-State Switch Leakage-Current Test Circuit

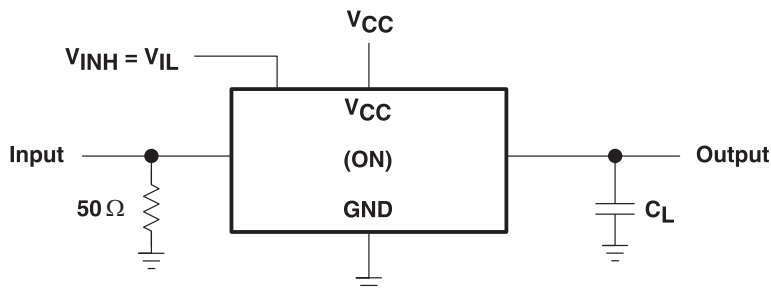
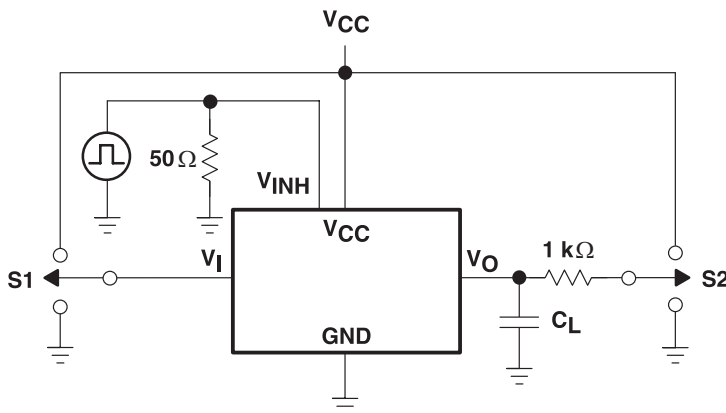


Figure 4. Propagation Delay Time, Signal Input to Signal Output

Parameter Measurement Information (continued)


| TEST | S1 | S2 |
|-------------------|----------|----------|
| t_{PLZ}/t_{PZL} | GND | V_{CC} |
| t_{PHZ}/t_{PZH} | V_{CC} | GND |

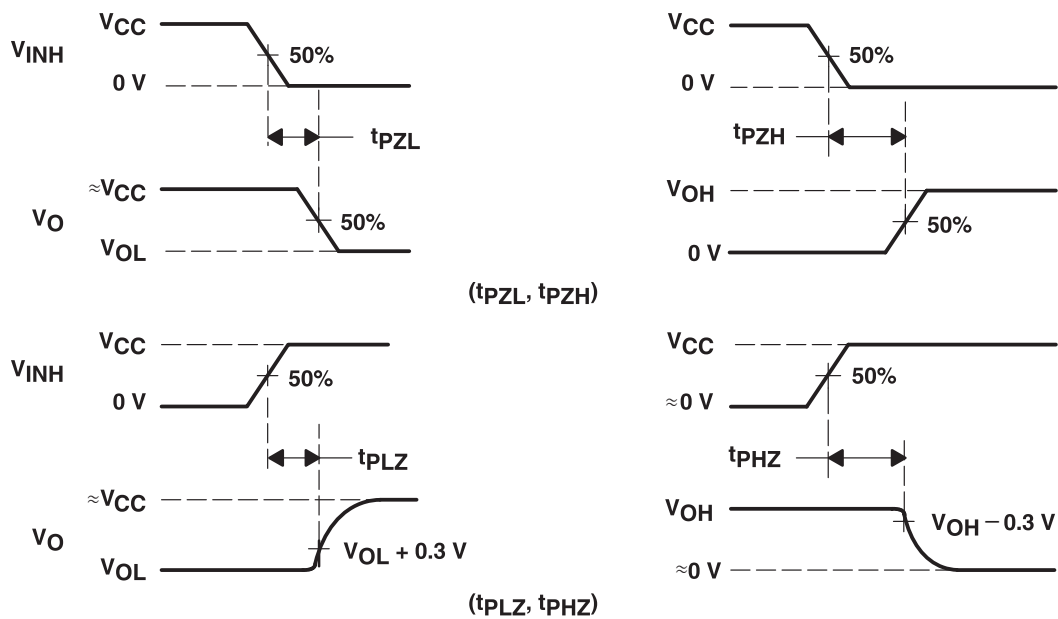
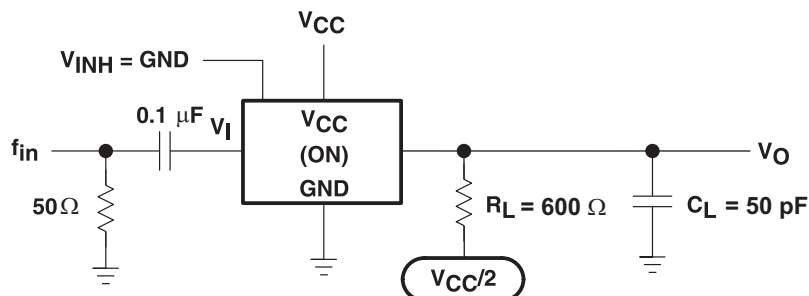
TEST CIRCUIT

VOLTAGE WAVEFORMS
Figure 5. Switching Time (t_{PZL}, t_{PLZ}, t_{PZH}, t_{PHZ}), Control to Signal Output

 NOTE A: f_{in} is a sine wave.

Figure 6. Frequency Response (Switch On)

Parameter Measurement Information (continued)

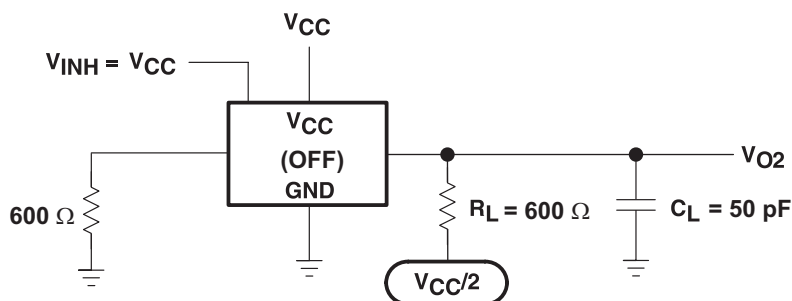
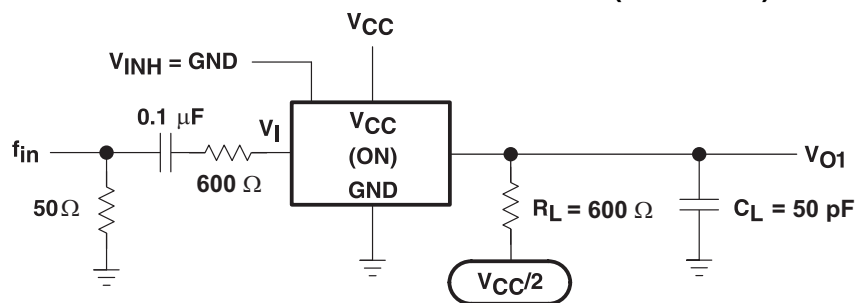


Figure 7. Crosstalk Between Any Two Switches

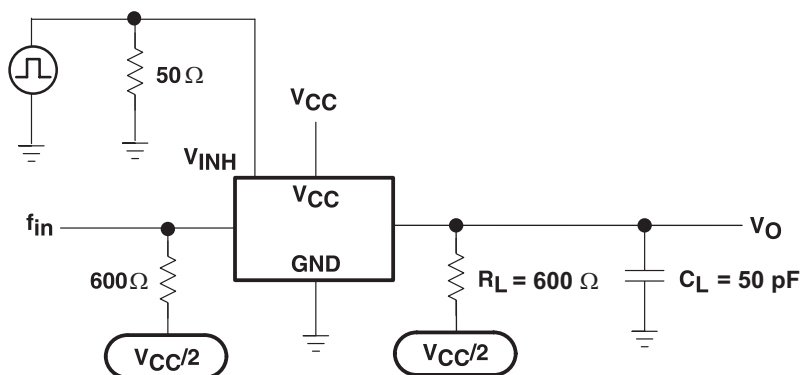


Figure 8. Crosstalk Between Control Input and Switch Output

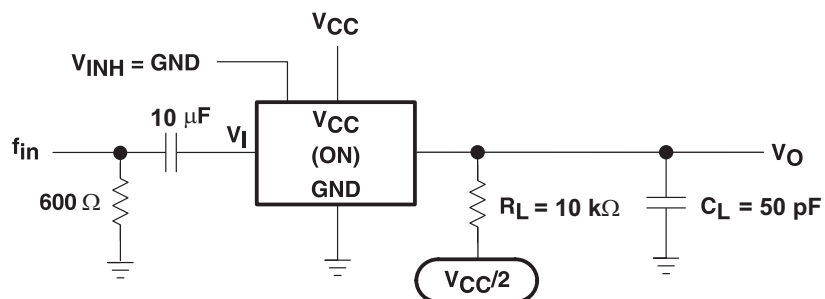
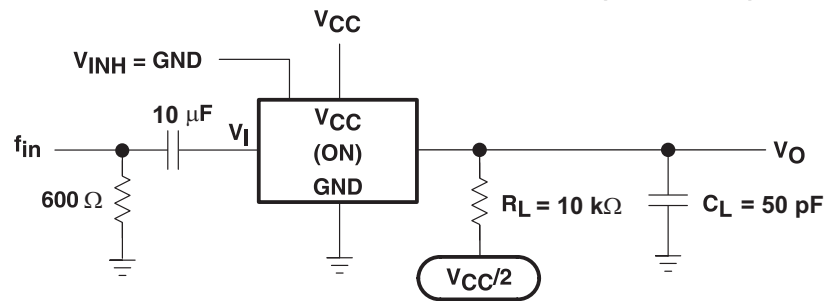


Figure 9. Feedthrough Attenuation (Switch Off)

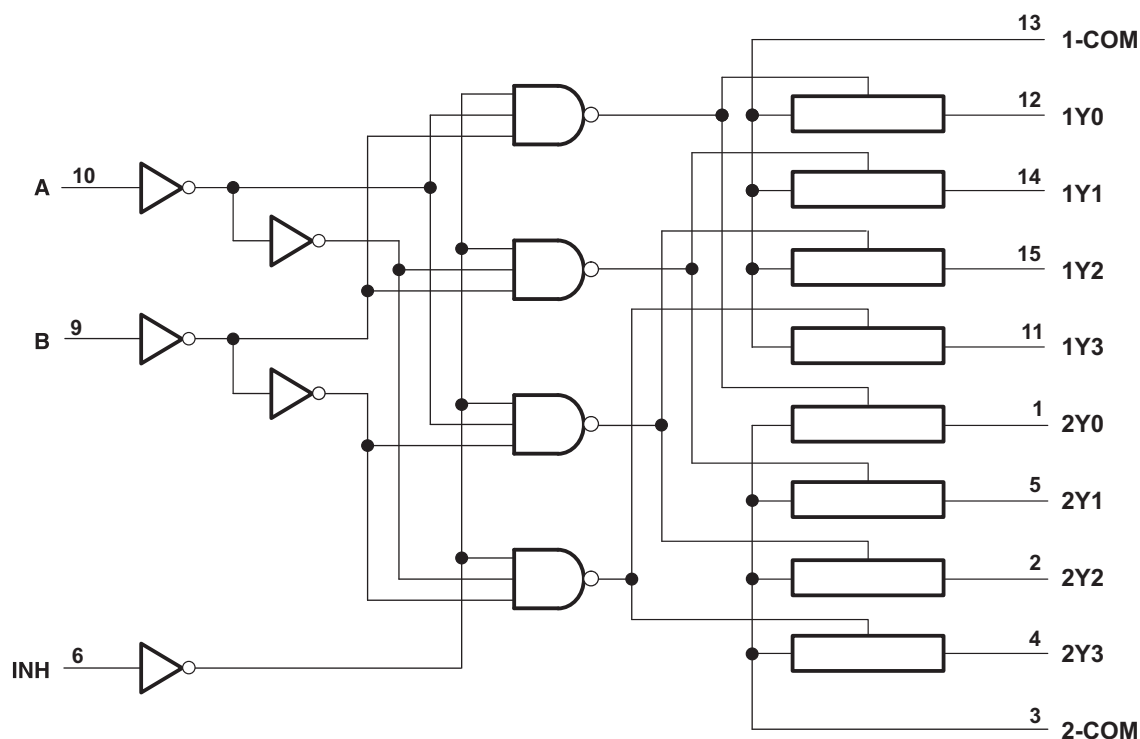
Parameter Measurement Information (continued)

Figure 10. Sine-Wave Distortion

8 Detailed Description

8.1 Overview

This device is a dual 4-channel analog multiplexer. A multiplexer is often used when several signals need to share the same device or resource. This device allows the selection of one of these signals at a time for analysis or propagation.

8.2 Functional Block Diagram



8.3 Feature Description

This device contains 2 separate 4-channel multiplexers for use in a variety of applications. The 4-channel multiplexers can also be configured as demultiplexers by using the COM pins as inputs and the 1Yx or 2Yx pins as outputs. This device is qualified for automotive applications and has an extended temperature range of -40C to 125C (maximum depends on package type).

8.4 Device Functional Modes

Table 1. Function Table

| INPUTS | | | ON CHANNEL |
|--------|---|---|------------|
| INH | B | A | |
| L | L | L | 1Y0, 2Y0 |
| L | L | H | 1Y1, 2Y1 |
| L | H | L | 1Y2, 2Y2 |
| L | H | H | 1Y3, 2Y3 |
| H | X | X | None |

9 Application and Implementation

NOTE

Information in the following applications sections is not part of the TI component specification, and TI does not warrant its accuracy or completeness. TI's customers are responsible for determining suitability of components for their purposes. Customers should validate and test their design implementation to confirm system functionality.

9.1 Application Information

A multiplexer is used in applications where multiple signals share a resource. In the example below, several different sensors are connected to the analog-to-digital converter (ADC) of a microcontroller (MCU).

9.2 Typical Application

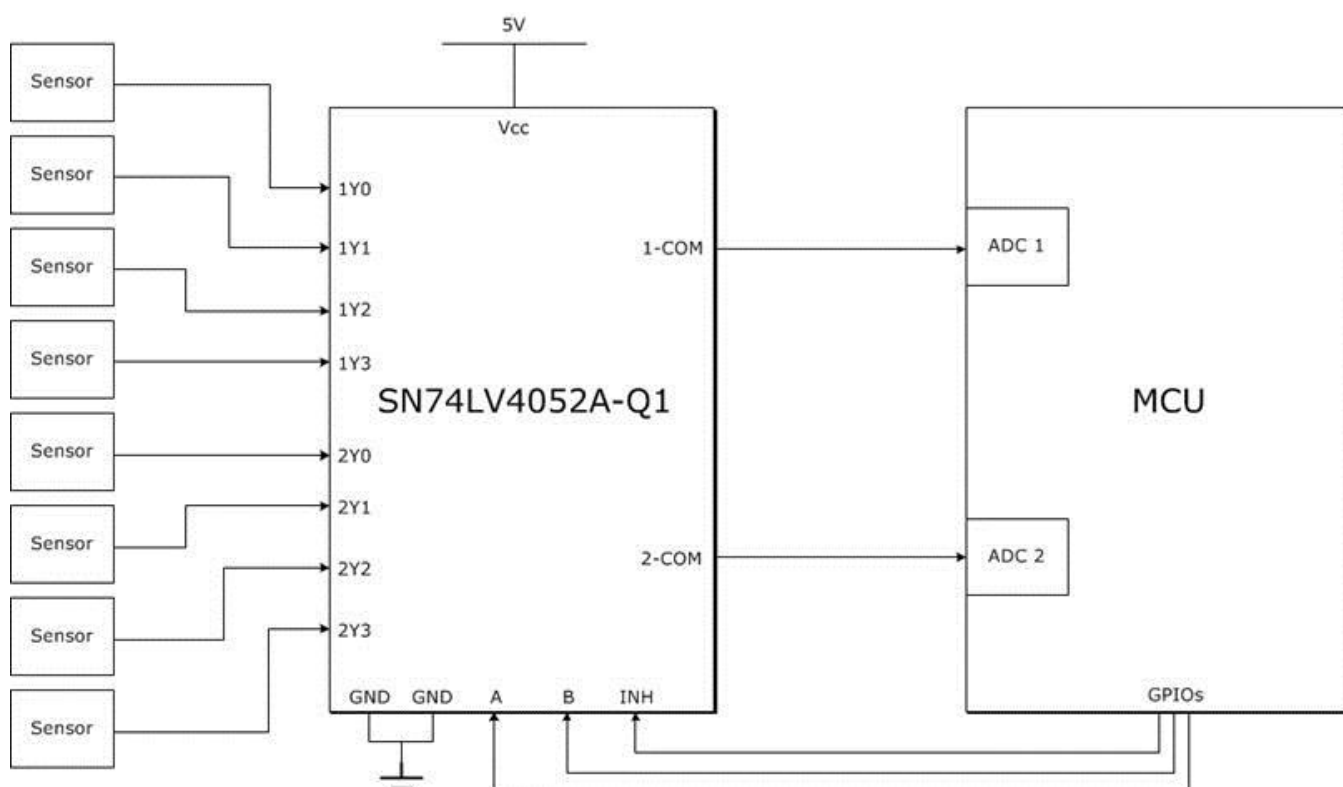


Figure 11. Typical Application Schematic

9.2.1 Design Requirements

Normally processing 8 different analog signals would require 8 separate ADCs, but this figure shows how to achieve this using only 2 ADCs and 3 GPIOs (general purpose input/outputs).

9.2.2 Detailed Design Procedure

To design with the SN74LV4052A-Q1, a stable input voltage between 2V (see [Recommended Operating Conditions](#)⁽¹⁾ for details) and 5.5 V must be available. Another important design consideration would be the characteristics of the signal that is being multiplexed to make sure no important information is lost due to timing or voltage level incompatibility with this device.

(1) Hold all unused inputs of the device at V_{CC} or GND to ensure proper device operation. See the TI application report, *Implications of Slow or Floating CMOS Inputs*, literature number [SCBA004](#).

10 Power Supply Recommendations

Most systems have a common 3.3 V or 5 V rail that may be used to supply the V_{CC} pin of this device. If this is not available, a Switch-Mode-Power-Supply (SMPS) or a Linear Dropout Regulator (LDO) may be used to supply this device from a higher voltage rail.

11 Layout

11.1 Layout Guidelines

In general, it is best to keep signal lines as short and as straight as possible. Incorporation of microstrip or stripline techniques is also recommended when signal lines are greater than 1 inch in length. These traces must be designed with a characteristic impedance of either 50 Ω or 75 Ω , as required by the application. Be careful placing this device too close to high voltage switching components, as they may cause interference.

11.2 Layout Example

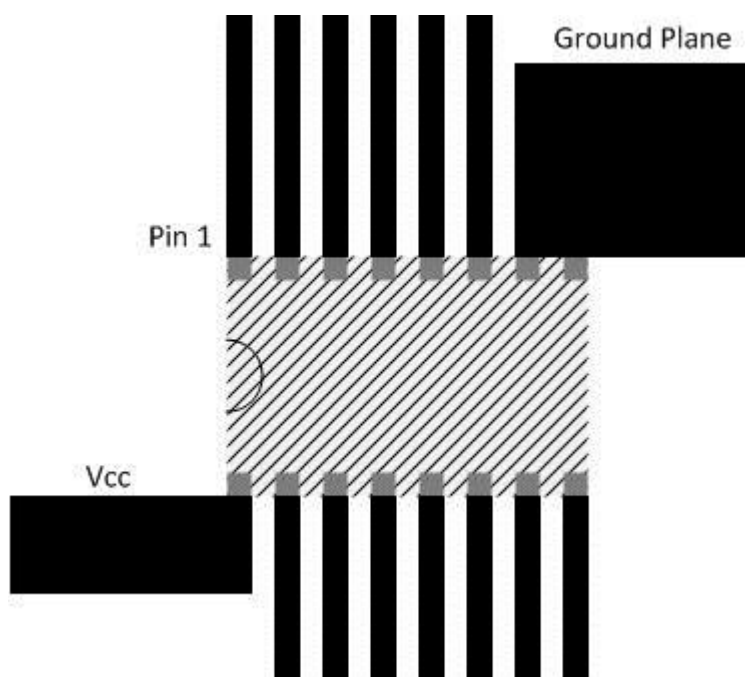


Figure 12. Layout Example Schematic

12 Device and Documentation Support

12.1 Trademarks

All trademarks are the property of their respective owners.

12.2 Electrostatic Discharge Caution



These devices have limited built-in ESD protection. The leads should be shorted together or the device placed in conductive foam during storage or handling to prevent electrostatic damage to the MOS gates.

12.3 Glossary

[SLYZ022](#) — *TI Glossary*.

This glossary lists and explains terms, acronyms, and definitions.

13 Mechanical, Packaging, and Orderable Information

The following pages include mechanical, packaging, and orderable information. This information is the most current data available for the designated devices. This data is subject to change without notice and revision of this document. For browser-based versions of this data sheet, refer to the left-hand navigation.

PACKAGING INFORMATION

| Orderable Device | Status (1) | Package Type | Package Drawing | Pins | Package Qty | Eco Plan (2) | Lead finish/ Ball material (6) | MSL Peak Temp (3) | Op Temp (°C) | Device Marking (4/5) | Samples |
|-------------------|---------------|--------------|--------------------|------|----------------|-----------------|--------------------------------------|----------------------|--------------|-------------------------|---------|
| CLV4052ATPWRG4Q1 | LIFEBUY | TSSOP | PW | 16 | 2000 | RoHS & Green | NIPDAU | Level-1-260C-UNLIM | -40 to 105 | L4052AQ | |
| SN74LV4052AQPWRQ1 | ACTIVE | TSSOP | PW | 16 | 2000 | RoHS & Green | NIPDAU | Level-1-260C-UNLIM | -40 to 125 | 4052AQ1 | Samples |
| SN74LV4052ATDRQ1 | ACTIVE | SOIC | D | 16 | 2500 | RoHS & Green | NIPDAU | Level-1-260C-UNLIM | -40 to 105 | L4052AQ | Samples |
| SN74LV4052ATPWRQ1 | LIFEBUY | TSSOP | PW | 16 | 2000 | RoHS & Green | NIPDAU | Level-1-260C-UNLIM | -40 to 105 | L4052AQ | |

(1) The marketing status values are defined as follows:

ACTIVE: Product device recommended for new designs.

LIFEBUY: TI has announced that the device will be discontinued, and a lifetime-buy period is in effect.

NRND: Not recommended for new designs. Device is in production to support existing customers, but TI does not recommend using this part in a new design.

PREVIEW: Device has been announced but is not in production. Samples may or may not be available.

OBSELETE: TI has discontinued the production of the device.

(2) **RoHS:** TI defines "RoHS" to mean semiconductor products that are compliant with the current EU RoHS requirements for all 10 RoHS substances, including the requirement that RoHS substance do not exceed 0.1% by weight in homogeneous materials. Where designed to be soldered at high temperatures, "RoHS" products are suitable for use in specified lead-free processes. TI may reference these types of products as "Pb-Free".

RoHS Exempt: TI defines "RoHS Exempt" to mean products that contain lead but are compliant with EU RoHS pursuant to a specific EU RoHS exemption.

Green: TI defines "Green" to mean the content of Chlorine (Cl) and Bromine (Br) based flame retardants meet JS709B low halogen requirements of <=1000ppm threshold. Antimony trioxide based flame retardants must also meet the <=1000ppm threshold requirement.

(3) MSL, Peak Temp. - The Moisture Sensitivity Level rating according to the JEDEC industry standard classifications, and peak solder temperature.

(4) There may be additional marking, which relates to the logo, the lot trace code information, or the environmental category on the device.

(5) Multiple Device Markings will be inside parentheses. Only one Device Marking contained in parentheses and separated by a "~" will appear on a device. If a line is indented then it is a continuation of the previous line and the two combined represent the entire Device Marking for that device.

(6) Lead finish/Ball material - Orderable Devices may have multiple material finish options. Finish options are separated by a vertical ruled line. Lead finish/Ball material values may wrap to two lines if the finish value exceeds the maximum column width.

Important Information and Disclaimer:The information provided on this page represents TI's knowledge and belief as of the date that it is provided. TI bases its knowledge and belief on information provided by third parties, and makes no representation or warranty as to the accuracy of such information. Efforts are underway to better integrate information from third parties. TI has taken and continues to take reasonable steps to provide representative and accurate information but may not have conducted destructive testing or chemical analysis on incoming materials and chemicals. TI and TI suppliers consider certain information to be proprietary, and thus CAS numbers and other limited information may not be available for release.

In no event shall TI's liability arising out of such information exceed the total purchase price of the TI part(s) at issue in this document sold by TI to Customer on an annual basis.

OTHER QUALIFIED VERSIONS OF SN74LV4052A-Q1 :

- Catalog : [SN74LV4052A](#)
- Enhanced Product : [SN74LV4052A-EP](#)

NOTE: Qualified Version Definitions:

- Catalog - TI's standard catalog product
- Enhanced Product - Supports Defense, Aerospace and Medical Applications

TAPE AND REEL INFORMATION



*All dimensions are nominal

| Device | Package Type | Package Drawing | Pins | SPQ | Reel Diameter (mm) | Reel Width W1 (mm) | A0 (mm) | B0 (mm) | K0 (mm) | P1 (mm) | W (mm) | Pin1 Quadrant |
|-------------------|--------------|-----------------|------|------|--------------------|--------------------|---------|---------|---------|---------|--------|---------------|
| CLV4052ATPWRG4Q1 | TSSOP | PW | 16 | 2000 | 330.0 | 12.4 | 6.9 | 5.6 | 1.6 | 8.0 | 12.0 | Q1 |
| SN74LV4052AQPWRQ1 | TSSOP | PW | 16 | 2000 | 330.0 | 12.4 | 6.9 | 5.6 | 1.6 | 8.0 | 12.0 | Q1 |
| SN74LV4052ATPWRQ1 | TSSOP | PW | 16 | 2000 | 330.0 | 12.4 | 6.9 | 5.6 | 1.6 | 8.0 | 12.0 | Q1 |

TAPE AND REEL BOX DIMENSIONS



*All dimensions are nominal

| Device | Package Type | Package Drawing | Pins | SPQ | Length (mm) | Width (mm) | Height (mm) |
|-------------------|--------------|-----------------|------|------|-------------|------------|-------------|
| CLV4052ATPWRG4Q1 | TSSOP | PW | 16 | 2000 | 367.0 | 367.0 | 35.0 |
| SN74LV4052AQPWRQ1 | TSSOP | PW | 16 | 2000 | 356.0 | 356.0 | 35.0 |
| SN74LV4052ATPWRQ1 | TSSOP | PW | 16 | 2000 | 356.0 | 356.0 | 35.0 |

D (R-PDSO-G16)

PLASTIC SMALL OUTLINE



NOTES:

- A. All linear dimensions are in inches (millimeters).
- B. This drawing is subject to change without notice.
- $\triangle C$ Body length does not include mold flash, protrusions, or gate burrs. Mold flash, protrusions, or gate burrs shall not exceed 0.006 (0,15) each side.
- $\triangle D$ Body width does not include interlead flash. Interlead flash shall not exceed 0.017 (0,43) each side.
- E. Reference JEDEC MS-012 variation AC.

D (R-PDSO-G16)

PLASTIC SMALL OUTLINE



- NOTES:
- A. All linear dimensions are in millimeters.
 - B. This drawing is subject to change without notice.
 - C. Publication IPC-7351 is recommended for alternate designs.
 - D. Laser cutting apertures with trapezoidal walls and also rounding corners will offer better paste release. Customers should contact their board assembly site for stencil design recommendations. Refer to IPC-7525 for other stencil recommendations.
 - E. Customers should contact their board fabrication site for solder mask tolerances between and around signal pads.



TSSOP - 1.2 mm max height

SMALL OUTLINE PACKAGE



1. All linear dimensions are in millimeters. Any dimensions in parenthesis are for reference only. Dimensioning and tolerancing per ASME Y14.5M.
2. This drawing is subject to change without notice.
3. This dimension does not include mold flash, protrusions, or gate burrs. Mold flash, protrusions, or gate burrs shall not exceed 0.15 mm per side.
4. This dimension does not include interlead flash. Interlead flash shall not exceed 0.25 mm per side.
5. Reference JEDEC registration MO-153.

EXAMPLE BOARD LAYOUT

PW0016A

TSSOP - 1.2 mm max height

SMALL OUTLINE PACKAGE



LAND PATTERN EXAMPLE
EXPOSED METAL SHOWN
SCALE: 10X



SOLDER MASK DETAILS

4220204/A 02/2017

NOTES: (continued)

6. Publication IPC-7351 may have alternate designs.

7. Solder mask tolerances between and around signal pads can vary based on board fabrication site.

EXAMPLE STENCIL DESIGN

PW0016A

TSSOP - 1.2 mm max height

SMALL OUTLINE PACKAGE



SOLDER PASTE EXAMPLE
BASED ON 0.125 mm THICK STENCIL
SCALE: 10X

4220204/A 02/2017

NOTES: (continued)

8. Laser cutting apertures with trapezoidal walls and rounded corners may offer better paste release. IPC-7525 may have alternate design recommendations.
9. Board assembly site may have different recommendations for stencil design.

IMPORTANT NOTICE AND DISCLAIMER

TI PROVIDES TECHNICAL AND RELIABILITY DATA (INCLUDING DATA SHEETS), DESIGN RESOURCES (INCLUDING REFERENCE DESIGNS), APPLICATION OR OTHER DESIGN ADVICE, WEB TOOLS, SAFETY INFORMATION, AND OTHER RESOURCES "AS IS" AND WITH ALL FAULTS, AND DISCLAIMS ALL WARRANTIES, EXPRESS AND IMPLIED, INCLUDING WITHOUT LIMITATION ANY IMPLIED WARRANTIES OF MERCHANTABILITY, FITNESS FOR A PARTICULAR PURPOSE OR NON-INFRINGEMENT OF THIRD PARTY INTELLECTUAL PROPERTY RIGHTS.

These resources are intended for skilled developers designing with TI products. You are solely responsible for (1) selecting the appropriate TI products for your application, (2) designing, validating and testing your application, and (3) ensuring your application meets applicable standards, and any other safety, security, regulatory or other requirements.

These resources are subject to change without notice. TI grants you permission to use these resources only for development of an application that uses the TI products described in the resource. Other reproduction and display of these resources is prohibited. No license is granted to any other TI intellectual property right or to any third party intellectual property right. TI disclaims responsibility for, and you will fully indemnify TI and its representatives against, any claims, damages, costs, losses, and liabilities arising out of your use of these resources.

TI's products are provided subject to [TI's Terms of Sale](#) or other applicable terms available either on [ti.com](#) or provided in conjunction with such TI products. TI's provision of these resources does not expand or otherwise alter TI's applicable warranties or warranty disclaimers for TI products.

TI objects to and rejects any additional or different terms you may have proposed.

Mailing Address: Texas Instruments, Post Office Box 655303, Dallas, Texas 75265
Copyright © 2024, Texas Instruments Incorporated