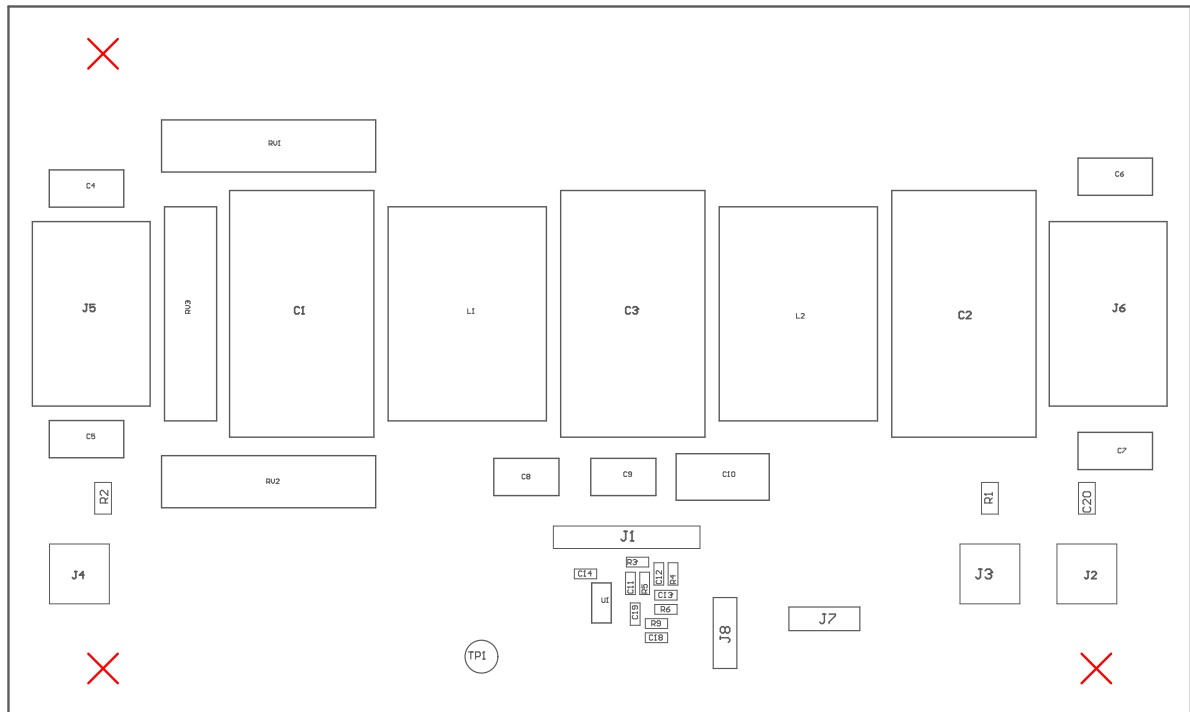
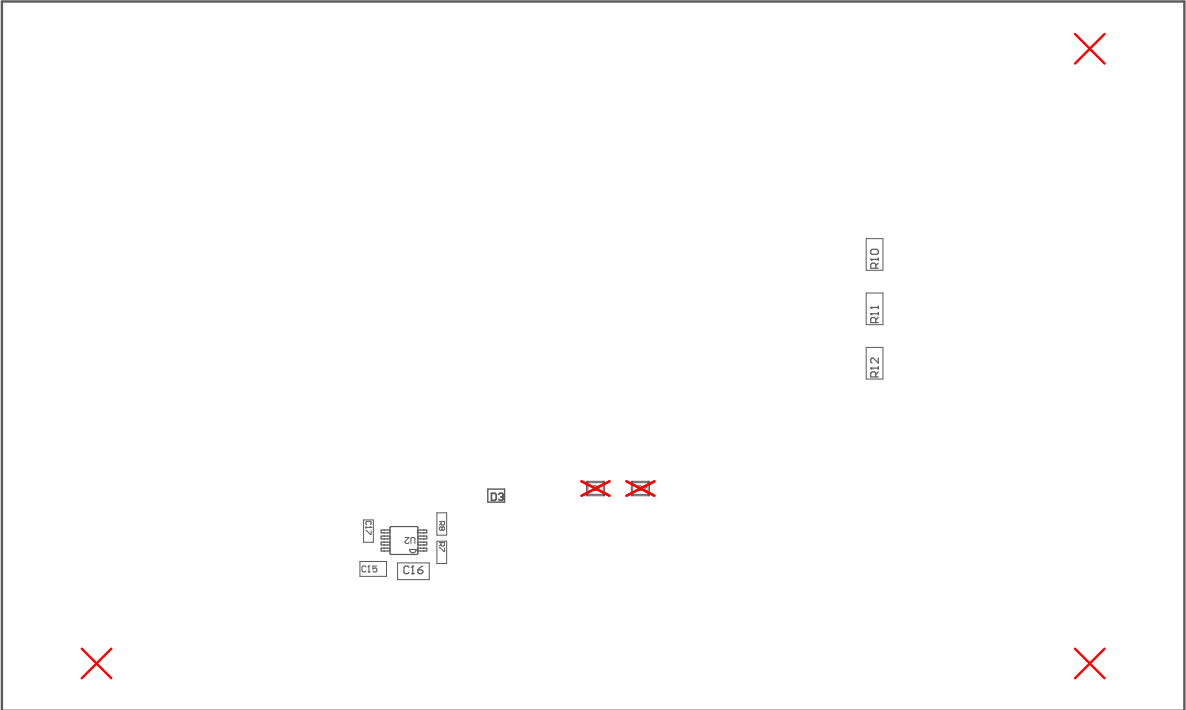


ZZ4 ■ These assemblies must comply with workmanship standards IPC-A-610 Class 2, unless otherwise specified.



COMPONENTS MARKED 'DNP' SHOULD NOT BE POPULATED.
ASSEMBLY VARIANT: 001

PCB VIEWED FROM TOP SIDE	BOARD #: SR005	REV: A	SUN REV: Not in version control
	TID #:		
PLOT NAME = Top Assembly Drawing	GENERATED : 6/30/2023 6:50:40 AM		TEXAS INSTRUMENTS



COMPONENTS MARKED 'DNP' SHOULD NOT BE POPULATED.
ASSEMBLY VARIANT: 001

PCB VIEWED FROM BOTTOM SIDE	BOARD #: SR005	REV: A	SUN REV: Not in version control
	TID #:		
PLOT NAME = Bottom Assembly Drawing	GENERATED : 6/30/2023 6:50:41 AM		TEXAS INSTRUMENTS