


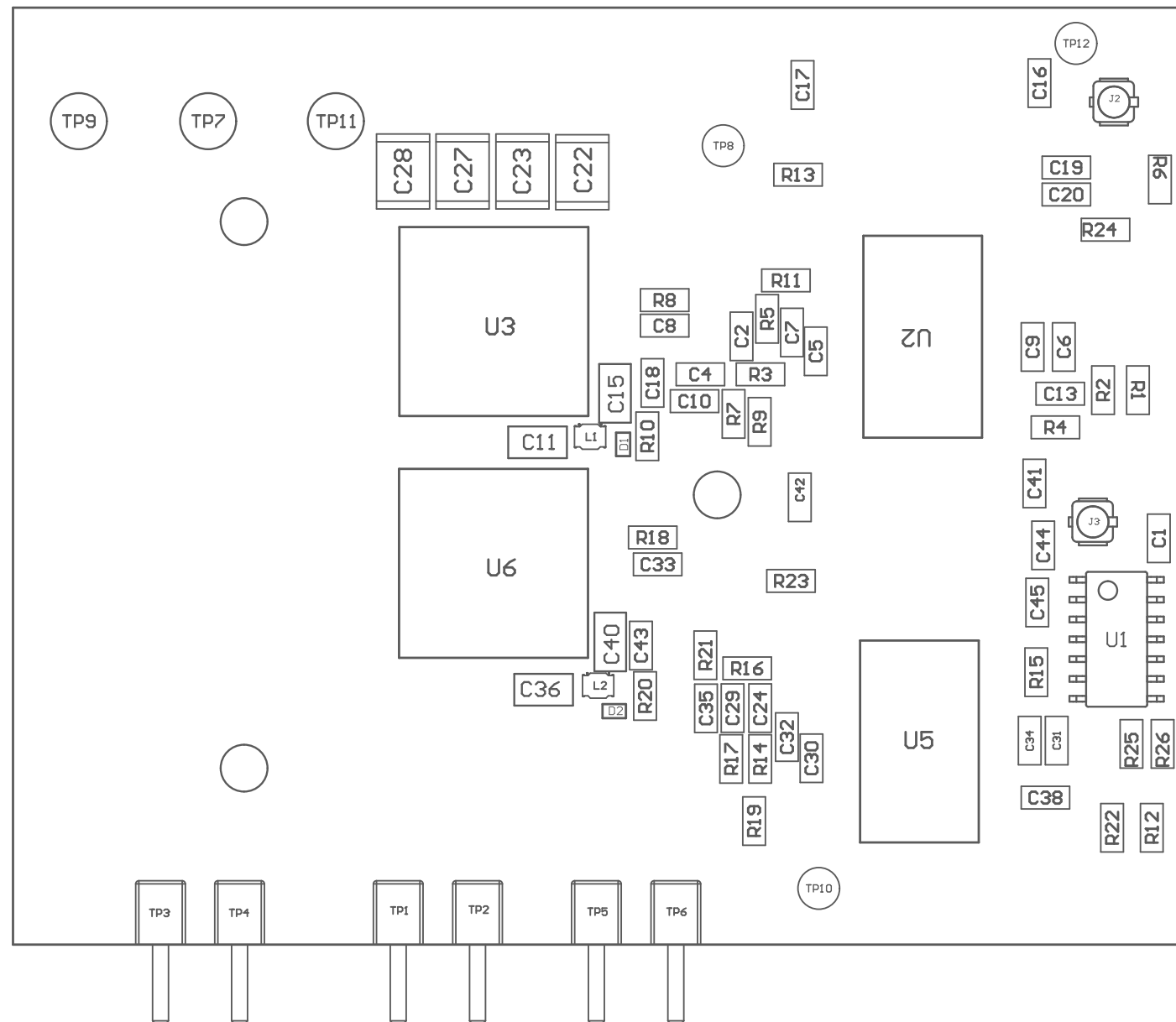


Z21  These assemblies are ESD sensitive, ESD precautions shall be observed.

Z22  These assemblies must be clean and free from flux and all contaminants. Use of no clean flux is not acceptable.

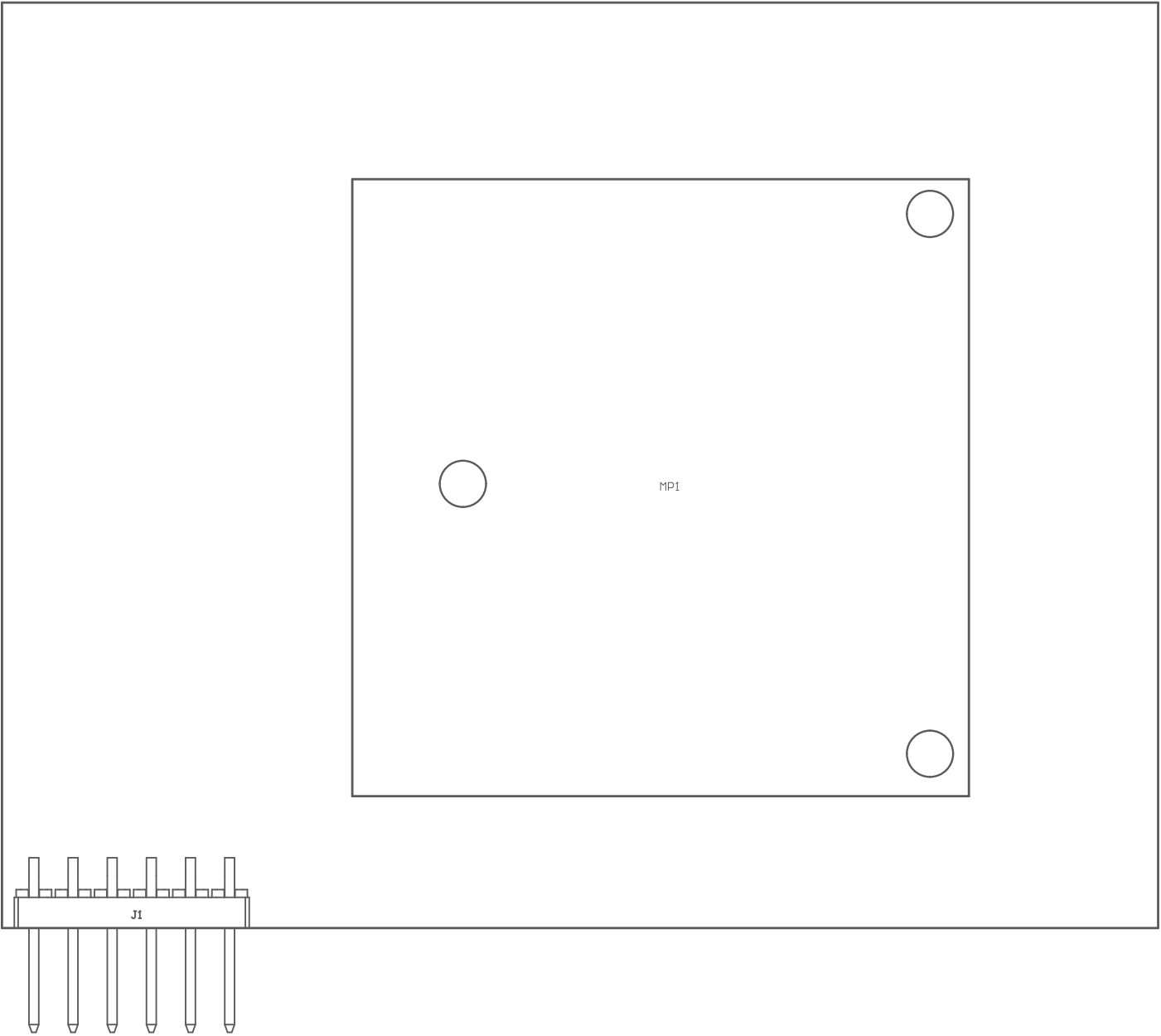
Z23  These assemblies must comply with workmanship standards IPC-A-610 Class 2, unless otherwise specified.



COMPONENTS MARKED 'DNP' SHOULD NOT BE POPULATED.

ASSEMBLY VARIANT: 001

PCB VIEWED FROM TOP SIDE	BOARD #:	TIDA-010210-6aN	REV:	E3	SUN REV:	Not in version control
LAYER NAME =	M5 Assembly Top	TID #:	TIDA-010210-6aN			
PLOT NAME =	Top Assembly Drawing	GENERATED :	3/18/2022 9:40:22 AM			TEXAS INSTRUMENTS



COMPONENTS MARKED 'DNP' SHOULD NOT BE POPULATED.

ASSEMBLY VARIANT: 001

PCB VIEWED FROM BOTTOM SIDE	BOARD #:TIDA-010210-GaN	REV:E3	SUN REV:Not in version control
LAYER NAME =M6 Assembly Bottom	TID #:TIDA-010210-GaN		
PLOT NAME =Bottom Assembly Drawing	GENERATED :3/18/20229:40:22 AM		TEXAS INSTRUMENTS