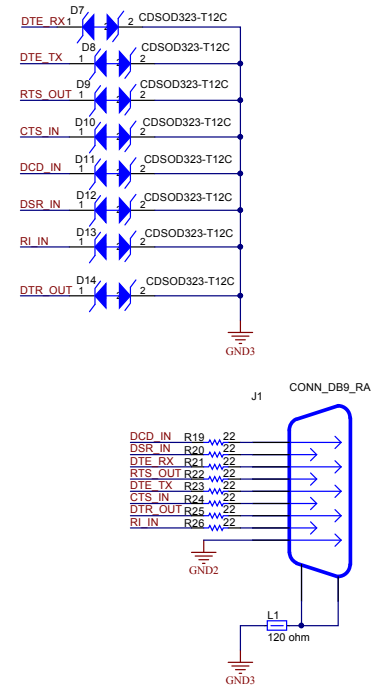
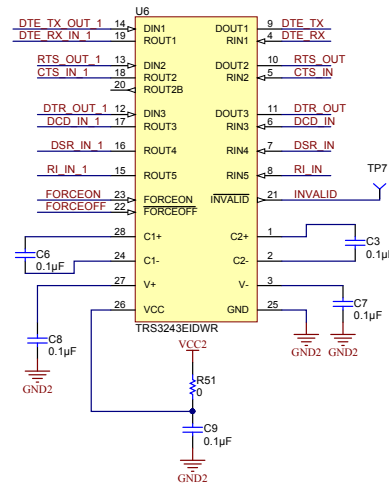
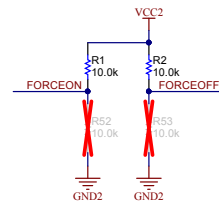
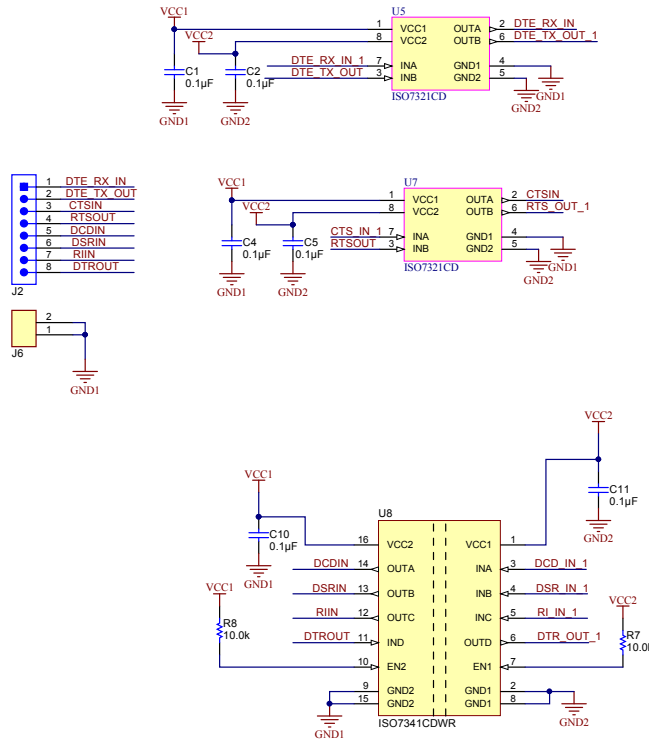
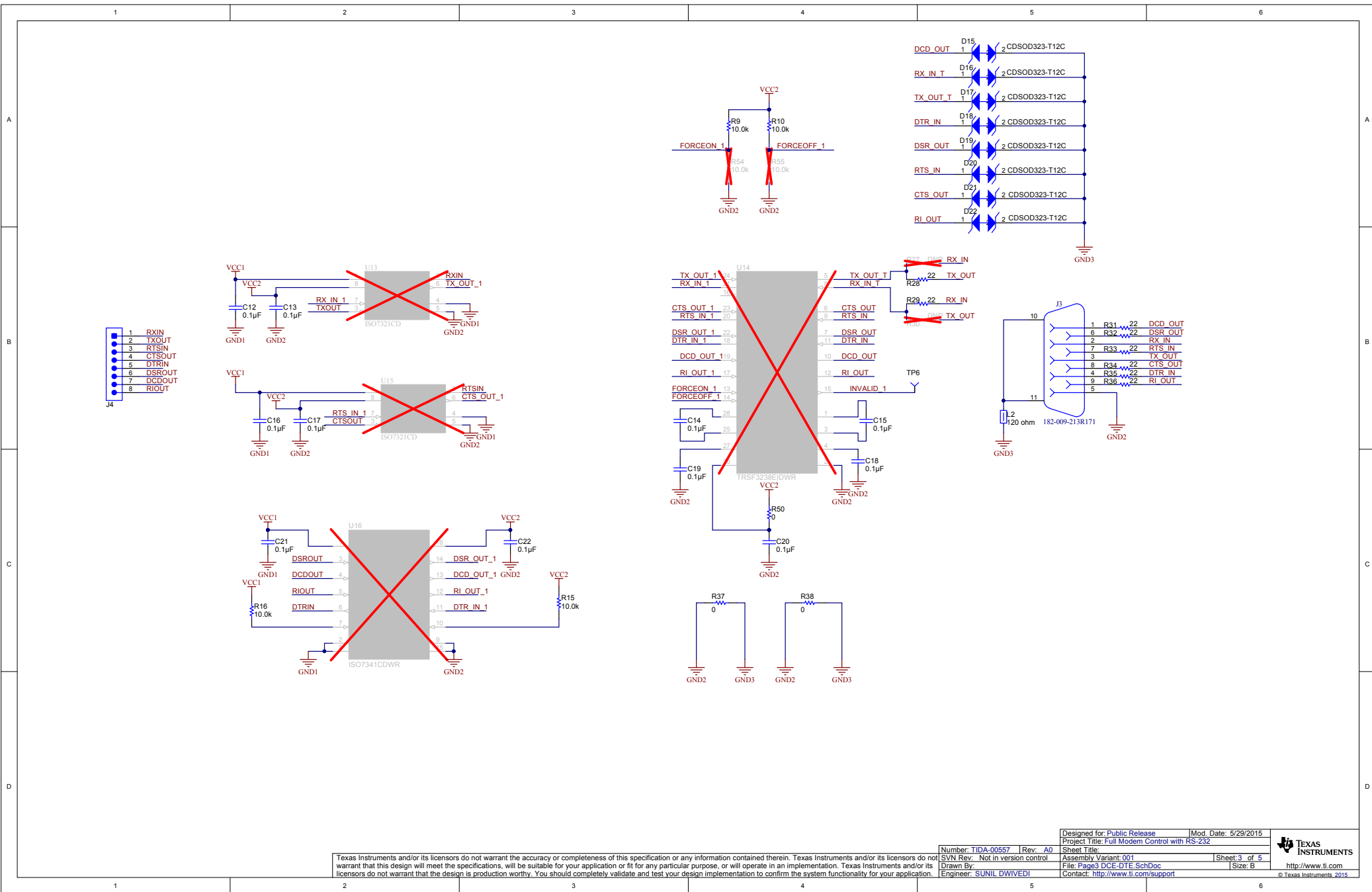
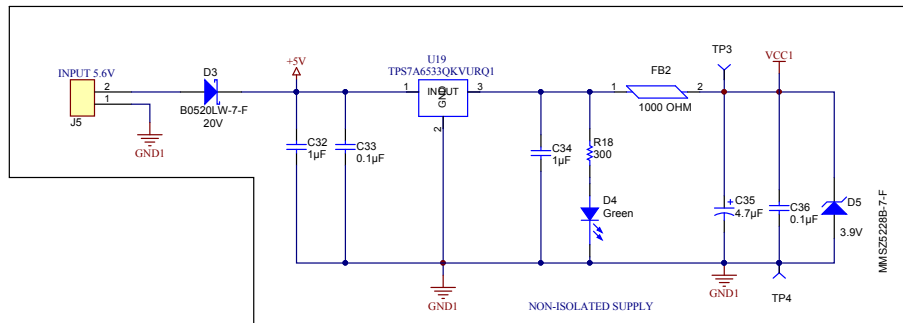
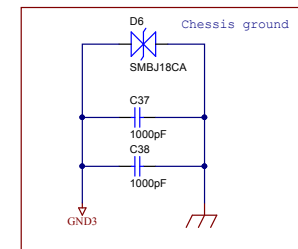
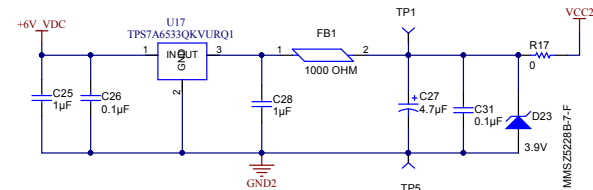
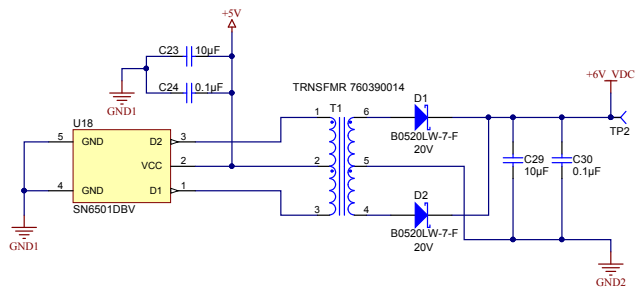


Texas Instruments and/or its licensors do not warrant the accuracy or completeness of this specification or any information contained therein. Texas Instruments and/or its licensors do not warrant that this design will meet the specifications, will be suitable for your application or fit for any particular purpose, or will operate in an implementation. Texas Instruments and/or its licensors do not warrant that the design is production worthy. You should completely validate and test your design implementation to confirm the system functionality for your application.

Number: TIDA-00557	Rev: A0	Designed for: Public Release	Mod. Date: 5/29/2015
SVN Rev: Not in version control	Assembly Variant: 001	Project Title: Full Modem Control with RS-232	Sheet: 1 of 5
Drawn By: SUNIL DWIVEDI	Engineer: SUNIL DWIVEDI	File: Page1 Cover Sheet ANSI-B SchDoc	Size: B
		Contact: http://www.ti.com/support	© Texas Instruments 2015







Texas Instruments and/or its licensors do not warrant the accuracy or completeness of this specification or any information contained therein. Texas Instruments and/or its licensors do not warrant that this design will meet the specifications, will be suitable for your application or fit for any particular purpose, or will operate in an implementation. Texas Instruments and/or its licensors do not warrant that the design is production worthy. You should completely validate and test your design implementation to confirm the system functionality for your application.

Number: TIDA-00557	Rev: A0	Designed for: Public Release	Mod. Date: 5/29/2015
SVN Rev: Not in version control	Assembly Variant: 001	Project Title: Full Modem Control with RS-232	Sheet: 4 of 5
Drawn By: SUNIL DWIVEDI	Contact: http://www.ti.com/support	File: Page4 Power Supply SchDoc	Size: B
© Texas Instruments 2015			



