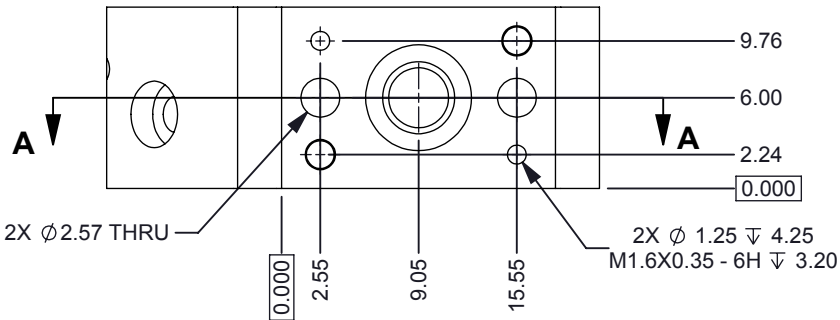
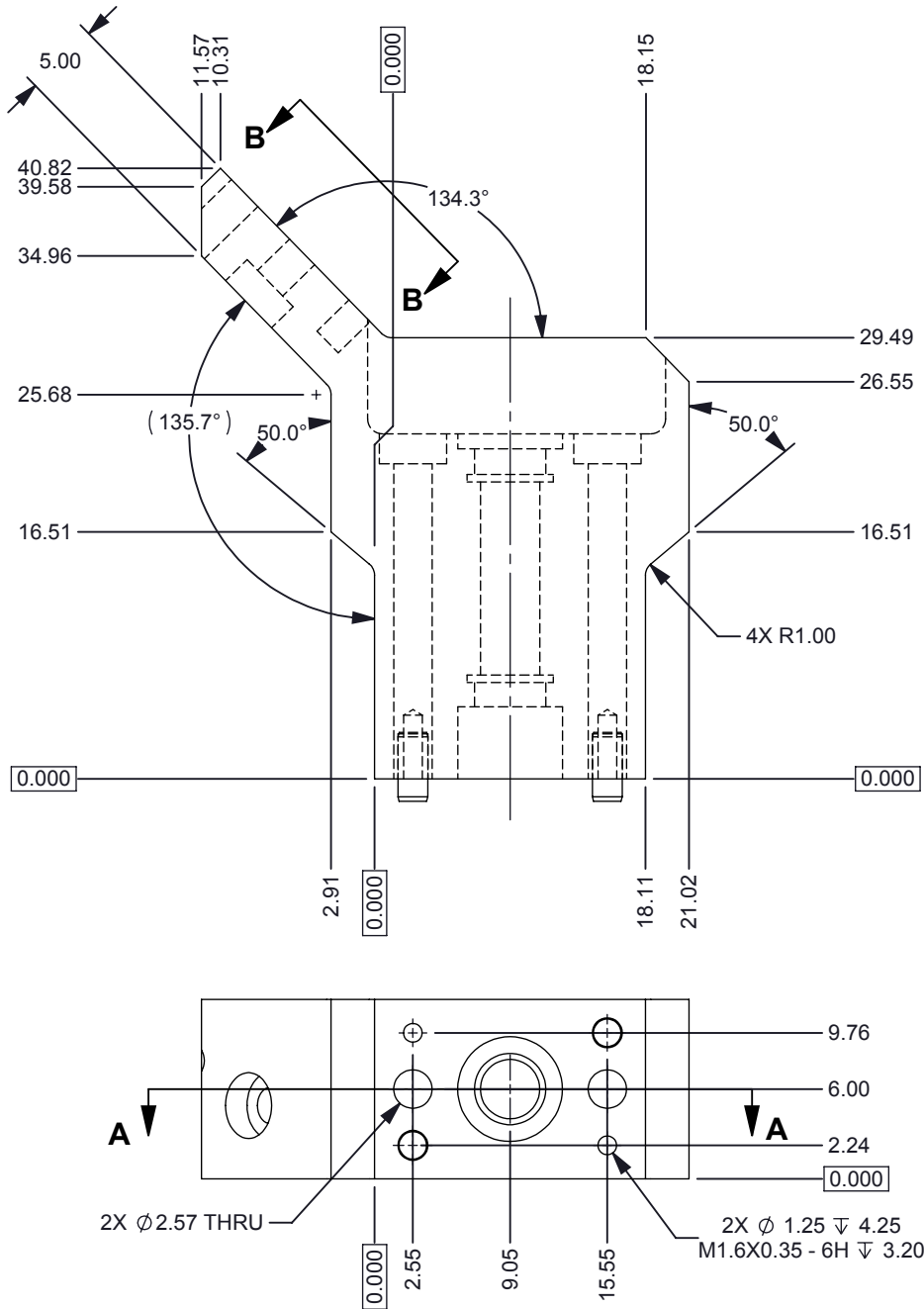
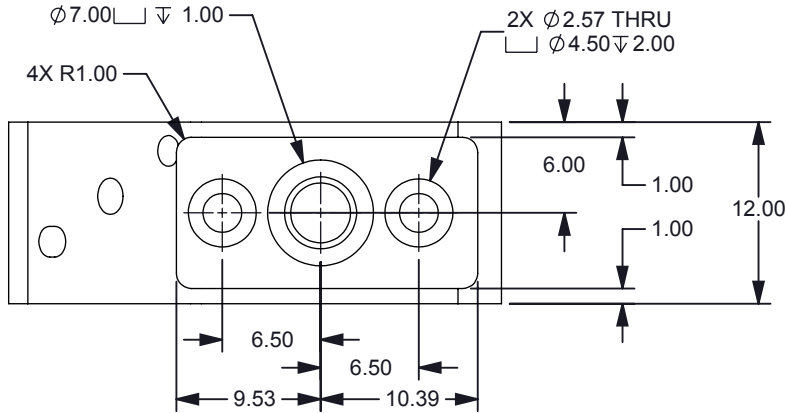
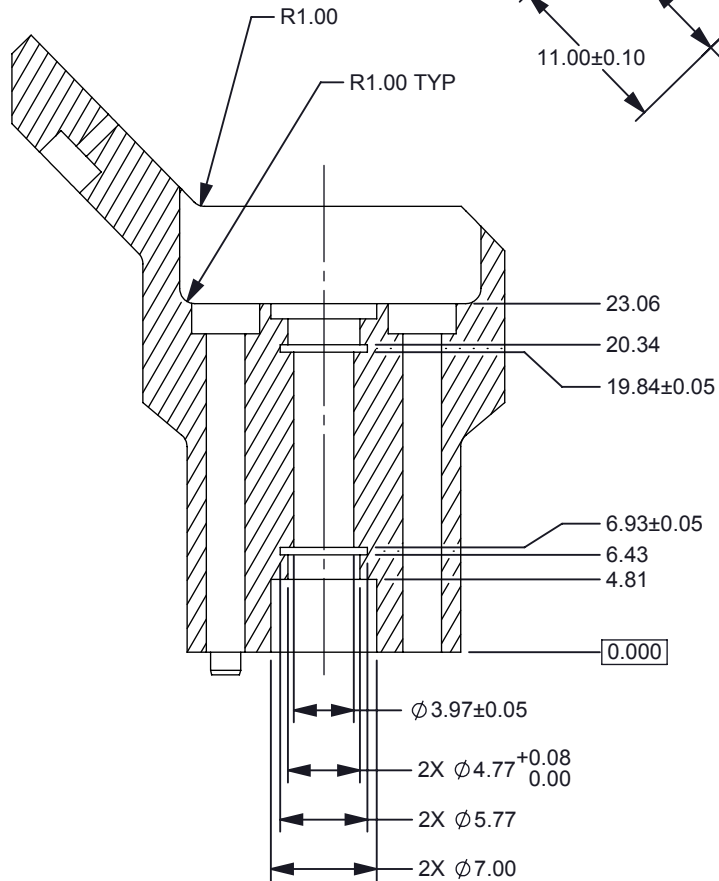
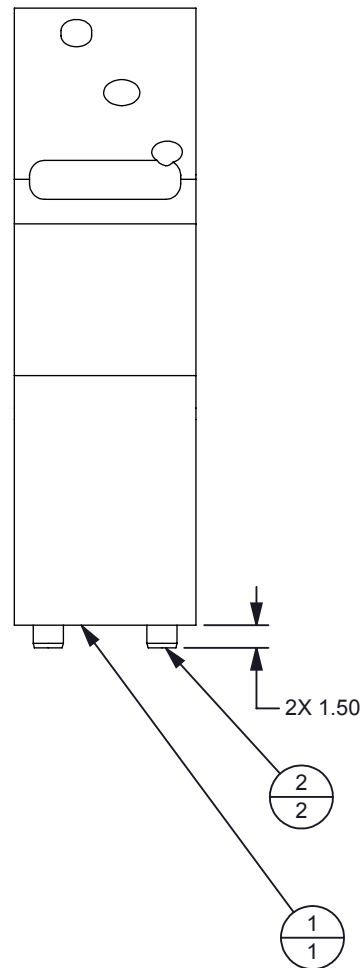


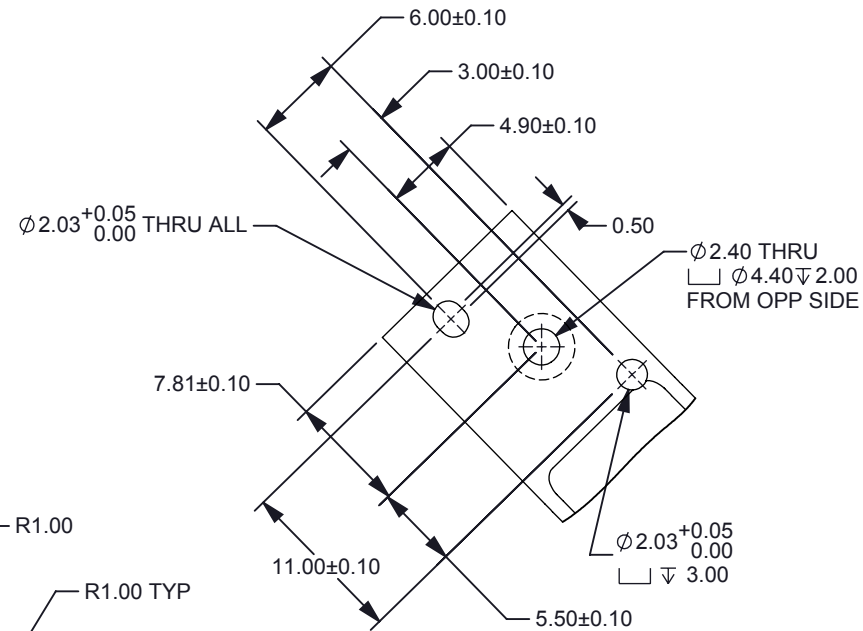
- NOTES: UNLESS OTHERWISE SPECIFIED:
- MATERIAL: 6061-T6 ALUMINUM
 - DO NOT BEAD BLAST. TYPICAL ALL SURFACES
 - FINISH: ANOPLATE ANOBLACK EC PROCESS. ALTERNATE BLACK ANODIZING PROCESSES NOT CONSIDERED AN EQUIVALENT



BILL OF MATERIAL						
ITEM NO.	QTY.	TI PART NUMBER	DESCRIPTION	VENDOR	VENDOR P/N	MATERIAL
1	1	2513928	CHASSIS, FIBER INPUT MODULE	MILLTECH	2513928	ALUMINUM 6061-T6
2	2	91585A912	DOWEL PIN, 2MM DIA X 4MM LG, SS	MCMaster-CARR	91585A912	18-8 STAINLESS ST



SECTION A-A



VIEW B-B

© COPYRIGHT 2014 TEXAS INSTRUMENTS
UNPUBLISHED, ALL RIGHTS RESERVED

DWG NO		SHT	1	
2513928		1		
S	REVISIONS			
	REV	DESCRIPTION	DATE	BY
	A	INITIAL RELEASE	9/9/2014	RDR

UNLESS OTHERWISE SPECIFIED

- DIMENSIONS ARE IN MILLIMETERS
- TOLERANCES: ANGLES ± 1°
2 PLACE DECIMALS ± 0.25
1 PLACE DECIMALS ± 0.50
- DIMENSIONAL LIMITS APPLY BEFORE PROCESSES
- INTERPRET DIMENSIONS IN ACCORDANCE WITH ASME Y14.5M-1994
- REMOVE ALL BURRS AND SHARP EDGES
- PARENTHETICAL INFO FOR REF ONLY

DWN
R ROWE
Engr
CQE/QA
CM
Apprvd
DATE
9/5/2014



CHASSIS ASSY, FIBER INPUT MODULE

NIRscan Nano

SIZE	DWG NO	REV
B	2513928	A
SCALE 2:1		SHEET 1 OF 1