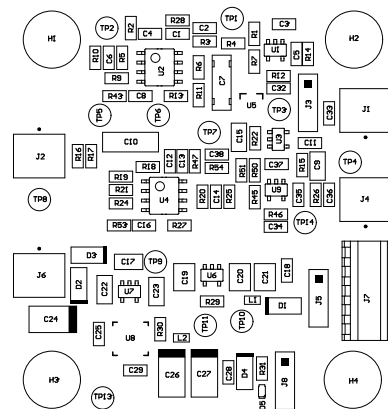


ALL ARTWORK VIEWED FROM TOP SIDE	BOARD #: TIDA-00777	REV: E2	SUN REV: Not In VersionControl
LAYER NAME = Top Paste	TID #: TIDA-00777		
PLOT NAME = Top Paste	GENERATED : 7/5/2016 6:22:41 PM		TEXAS INSTRUMENTS

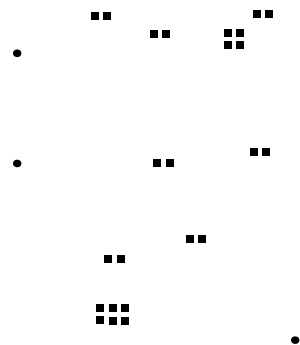
ZZZ ■ These assemblies are ESD sensitive, ESD precautions shall be observed.

224 ■ These assemblies must comply with workmanship standards IPC-A-610 Class 2, unless otherwise specified.

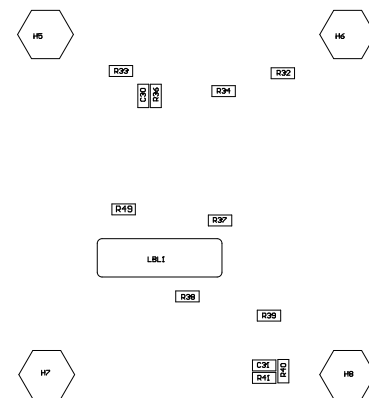


COMPONENTS MARKED 'DNP' SHOULD NOT BE POPULATED.
ASSEMBLY VARIANT: [No Variations]

PCB VIEWED FROM TOP SIDE	BOARD #: TIDA-00777	REV: E2	SUN REV: Not In VersionControl
M5 Assembly Top	TID #: TIDA-00777		
PLOT NAME = Top Assembly Drawing	GENERATED : 7/5/2016 6:22:42 PM		TEXAS INSTRUMENTS

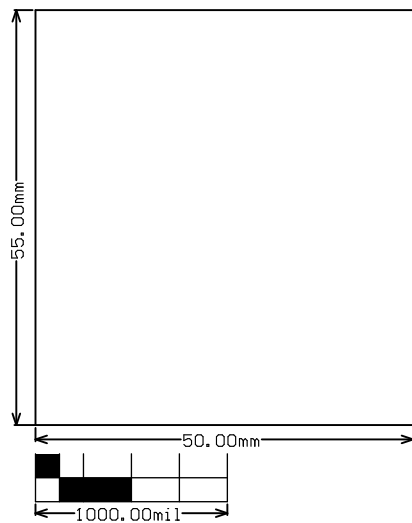


ALL ARTWORK VIEWED FROM TOP SIDE	BOARD #: TIDA-00777	REV: E2	SUN REV: Not In VersionControl
LAYER NAME = Bottom Paste	TID #: TIDA-00777		
PLOT NAME = Bottom Paste	GENERATED : 7/5/2016 6:22:42 PM		TEXAS INSTRUMENTS



COMPONENTS MARKED 'DNP' SHOULD NOT BE POPULATED.
ASSEMBLY VARIANT: [No Variations]

PCB VIEWED FROM BOTTOM SIDE	BOARD #: TIDA-00777	REV: E2	SUN REV: Not In VersionControl
M6 Assembly Bottom	TID #: TIDA-00777		
PLOT NAME = Bottom Assembly Drawing	GENERATED : 7/5/2016 6:22:43 PM		TEXAS INSTRUMENTS



ALL ARTWORK VIEWED FROM TOP SIDE	BOARD #: TIDA-00777	REV: E2	SUN REV: Not In VersionControl
LAYER NAME = M1 Board Outline	TID #: TIDA-00777		
PLOT NAME = Board Outline	GENERATED : 7/5/2016 6:22:44 PM	TEXAS INSTRUMENTS	