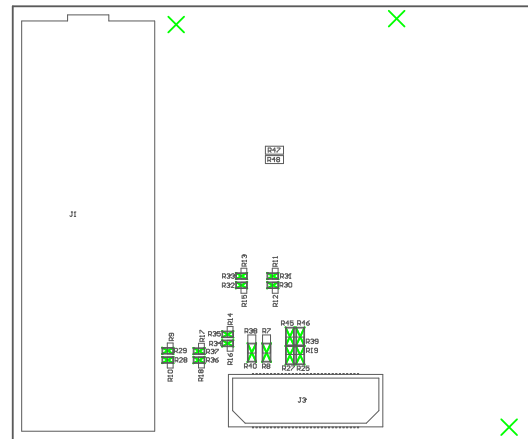
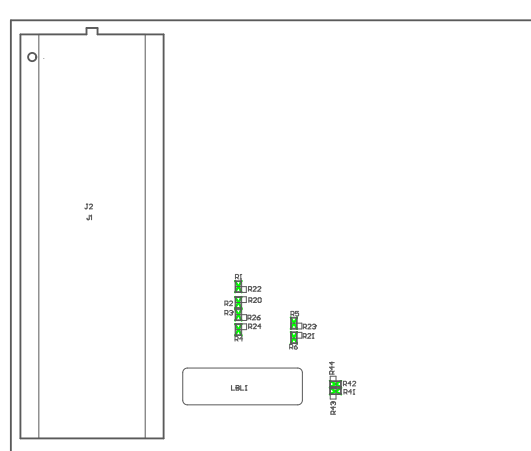


221 ■ Install label in silkscreened box after final wash. Text shall be 8 pt font. Text shall be per the Label Table in the PDF schematic.  
222 ■ These assemblies are ESD sensitive, ESD precautions shall be observed.  
223 ■ These assemblies must be clean and free from flux and all contaminants. Use of no clean flux is not acceptable.  
224 ■ These assemblies must comply with workmanship standards IPC-A-610 Class 2, unless otherwise specified.



COMPONENTS MARKED 'DNP' SHOULD NOT BE POPULATED.  
ASSEMBLY VARIANT: 001

PCB VIEWED FROM TOP SIDE	BOARD #: FMC+ TO FMC	REV: E3	SUN REV:
LAYER NAME = ASSEMBLY TOP	TID #: 010131		
PLOT NAME = Top Assembly Drawing	GENERATED : 2/12/2019 11:54:19 AM		TEXAS INSTRUMENTS



COMPONENTS MARKED 'DNP' SHOULD NOT BE POPULATED.  
ASSEMBLY VARIANT: 001

PCB VIEWED FROM BOTTOM SIDE	BOARD #: FMC+ TO FMC	REV: E3	SUN REV:
LAYER NAME = ASSEMBLY BOTTOM	TID #: 010131		
PLOT NAME = Bottom Assembly Drawing	GENERATED : 2/12/2019 11:54:19 AM		TEXAS INSTRUMENTS