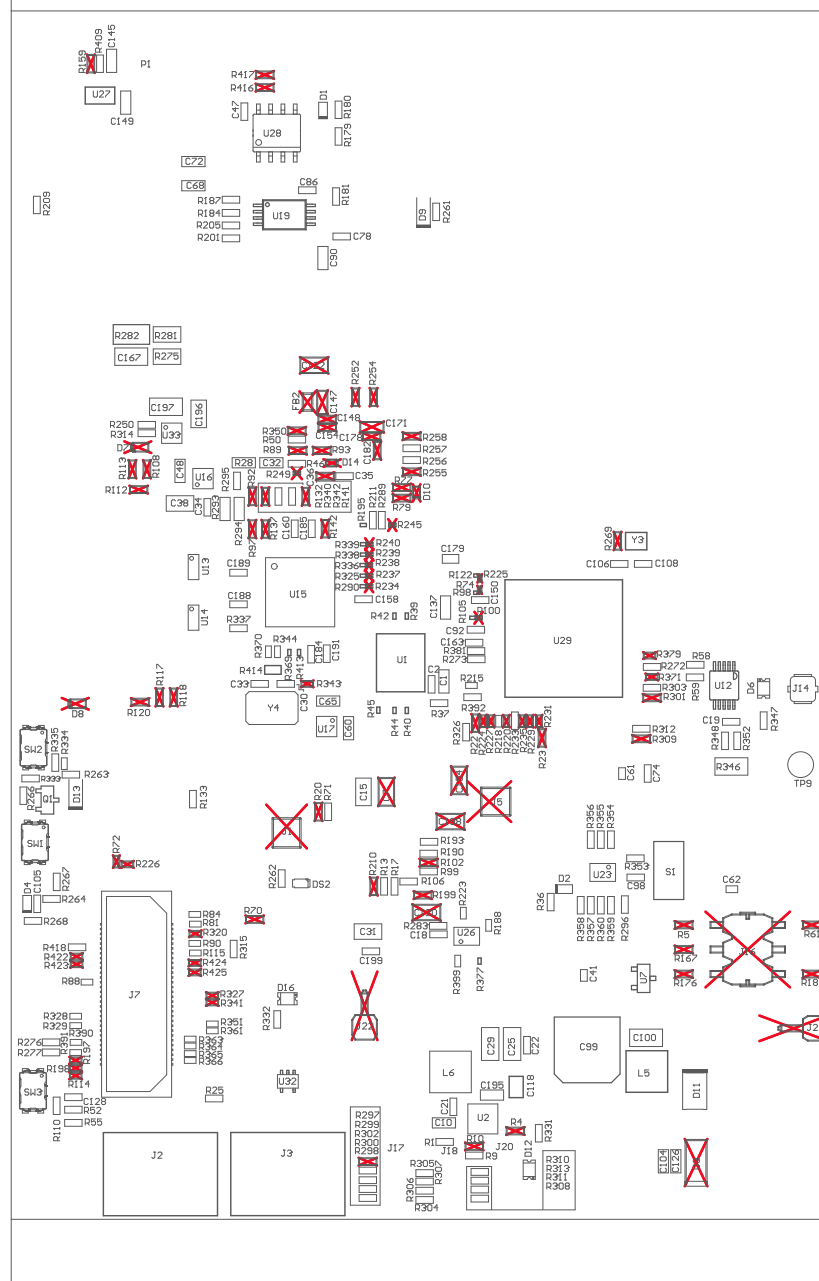


221 ■ Install label in silkscreened box after final wash. Text shall be 8 pt font. Text shall be per the Label Table in the PDF schematic.

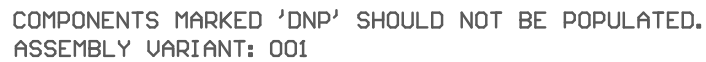
222 ■ These assemblies are ESD sensitive, ESD precautions shall be observed.

223 ■ These assemblies must be clean and free from flux and all contaminants. Use of no clean flux is not acceptable.

224 ■ These assemblies must comply with workmanship standards IPC-A-610 Class 2, unless otherwise specified.



PCB VIEWED FROM TOP SIDE	BOARD #: PROC113	REV: D	SUN REV: Not in version control
	TID #: N/A		
PLOT NAME = Top Assembly Drawing	GENERATED : 1/17/2023 3:08:47 PM	TEXAS INSTRUMENTS	



TEXAS INSTRUMENTS