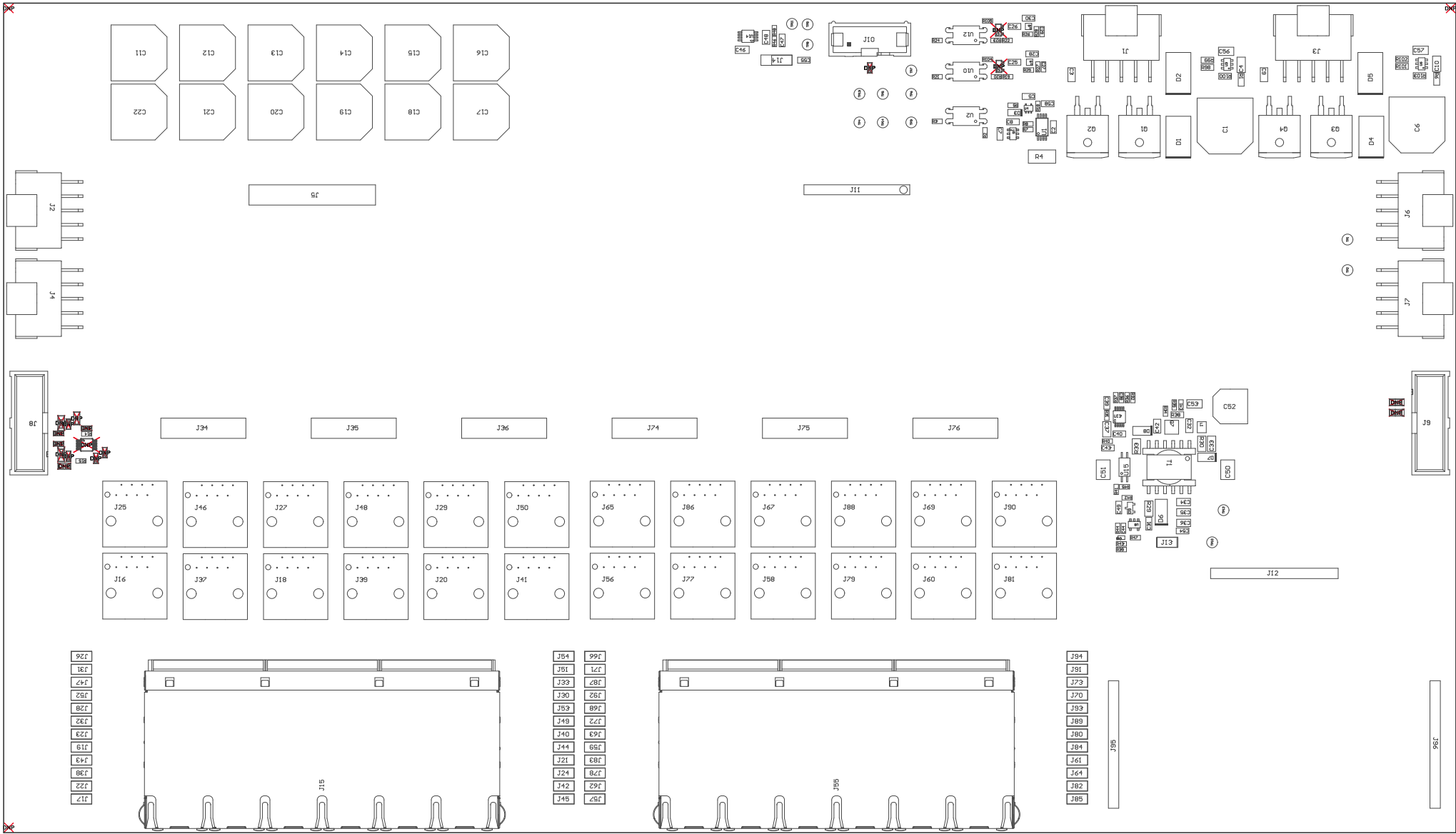


Z22 ■These assemblies are ESD sensitive, ESD precautions shall be observed.

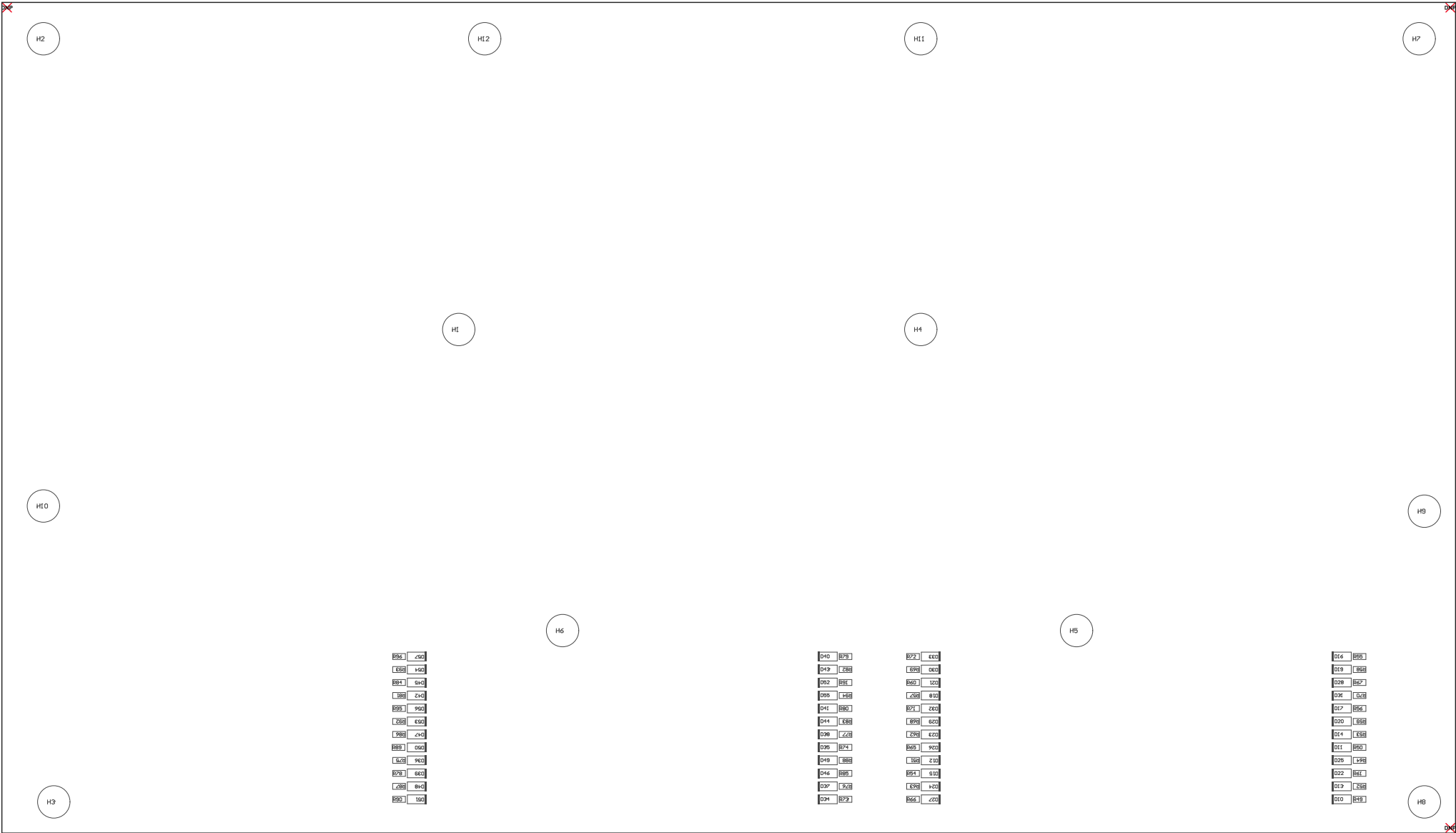
Z23 ■These assemblies must be clean and free from flux and all contaminants. Use of no clean flux is not acceptable.

Z24 ■These assemblies must comply with workmanship standards IPC-A-610 Class 2, unless otherwise specified.



COMPONENTS MARKED 'DNP' SHOULD NOT BE POPULATED.  
ASSEMBLY VARIANT: 001

PCB VIEWED FROM TOP SIDE	BOARD #: PSIL081	REV: A	SUN REV: Not In VersionControl
PLOT NAME = Top Assembly Drawing	GENERATED : 5/17/2019 2:22:19 PM	TEXAS INSTRUMENTS	



COMPONENTS MARKED 'DNP' SHOULD NOT BE POPULATED.  
ASSEMBLY VARIANT: 001

PCB VIEWED FROM BOTTOM SIDE	BOARD #: PSIL081	REV: A	SUN REV: Not In VersionControl
PLOT NAME = Bottom Assembly Drawing	GENERATED : 5/17/2019 2:22:25 PM	TEXAS INSTRUMENTS	