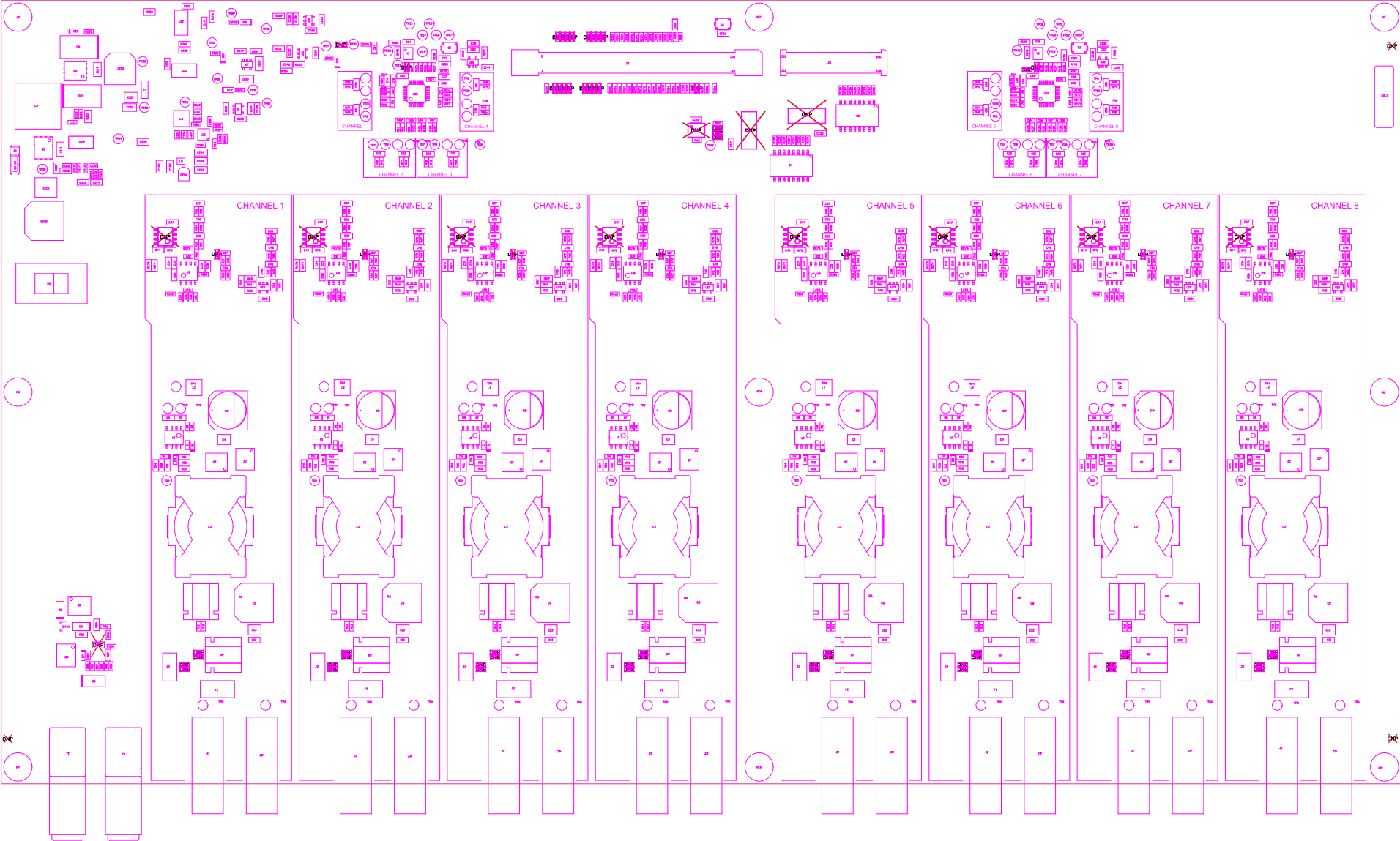


100 Always look in chronological from left to right. That must be 5 or 10 min. That must be put the same value in the top assembly.

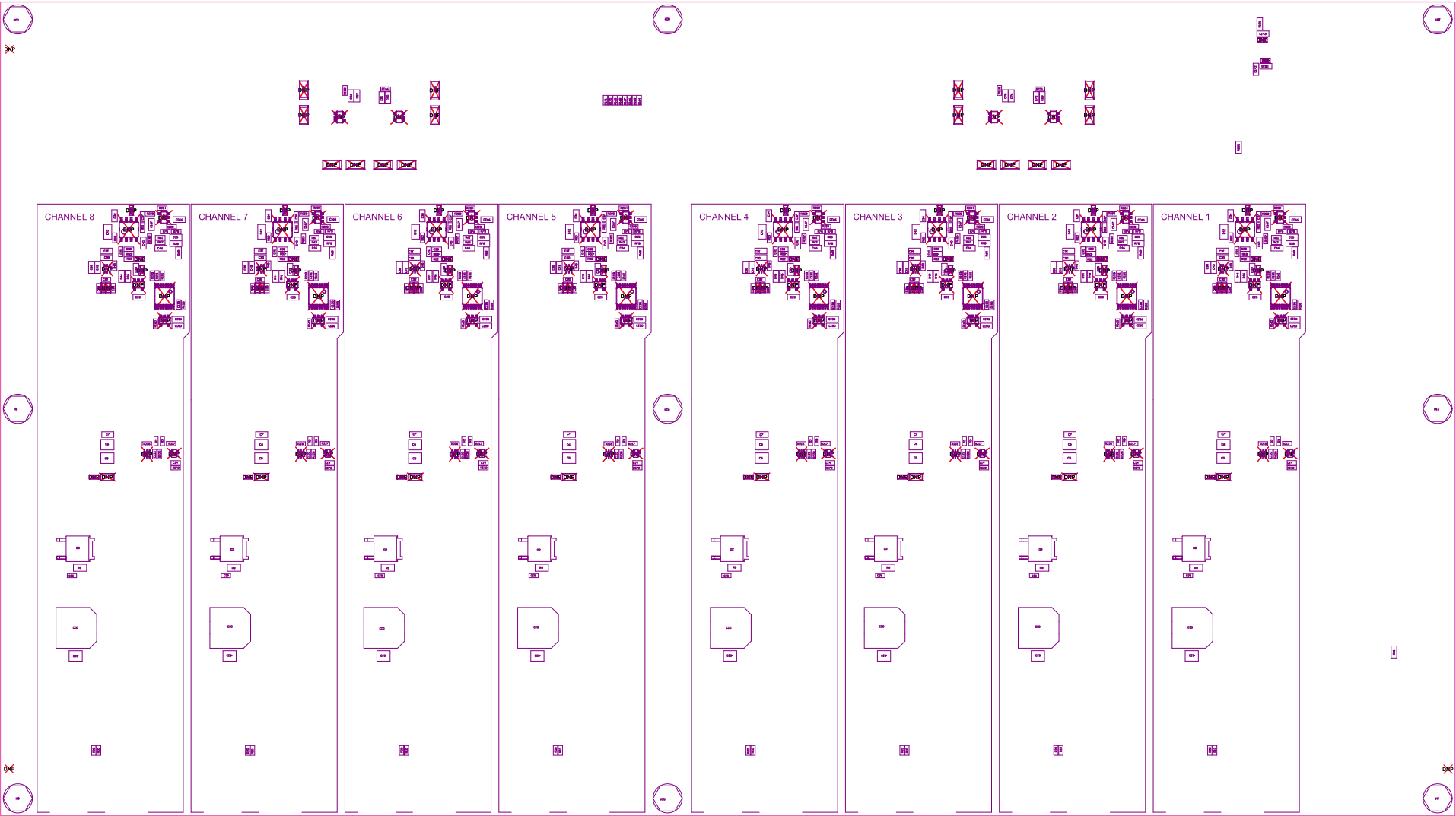
101 Many assemblies are 100 identical, 100 procedures must be identical.

102 Many assemblies are 100 identical, 100 procedures must be identical.

103 Many assemblies are 100 identical, 100 procedures must be identical.



FOR ORDER FROM THE SIDE	ORDER IN	ORDER IN	ORDER IN	ORDER IN	ORDER IN
ORDER IN	ORDER IN	ORDER IN	ORDER IN	ORDER IN	ORDER IN
ORDER IN	ORDER IN	ORDER IN	ORDER IN	ORDER IN	ORDER IN
ORDER IN	ORDER IN	ORDER IN	ORDER IN	ORDER IN	ORDER IN



COMPONENTS SHOWN TOP SHOULD NOT BE REPLACED.
REPLACE W/IDENTICAL

FOR ISSUED FROM APPROV. DES.	DATE N	1/20/2020	REV	02	REV N/A	Rev 3/1/2016/2017
LAST DATE = NO. Normally, Service	TO N	02/20/20				
PLAT DATE =	Service Assembly Drawing	REVISIONS	1	01-01-2020	PLATE N	THIS DRAWING