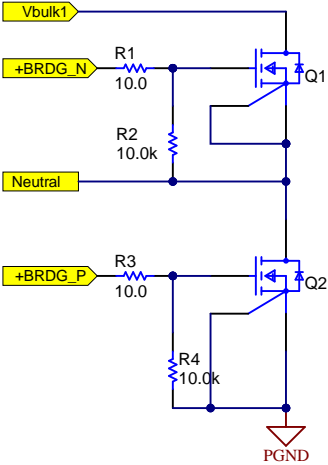


Assembly Notes:

Intended to be soldered into PMP23069 main board
Short U1 RDRV pin to LDO5V pin via C2 and C4 pads (GaN slew rate = 100V/ns)



CAUTION HOT SURFACE



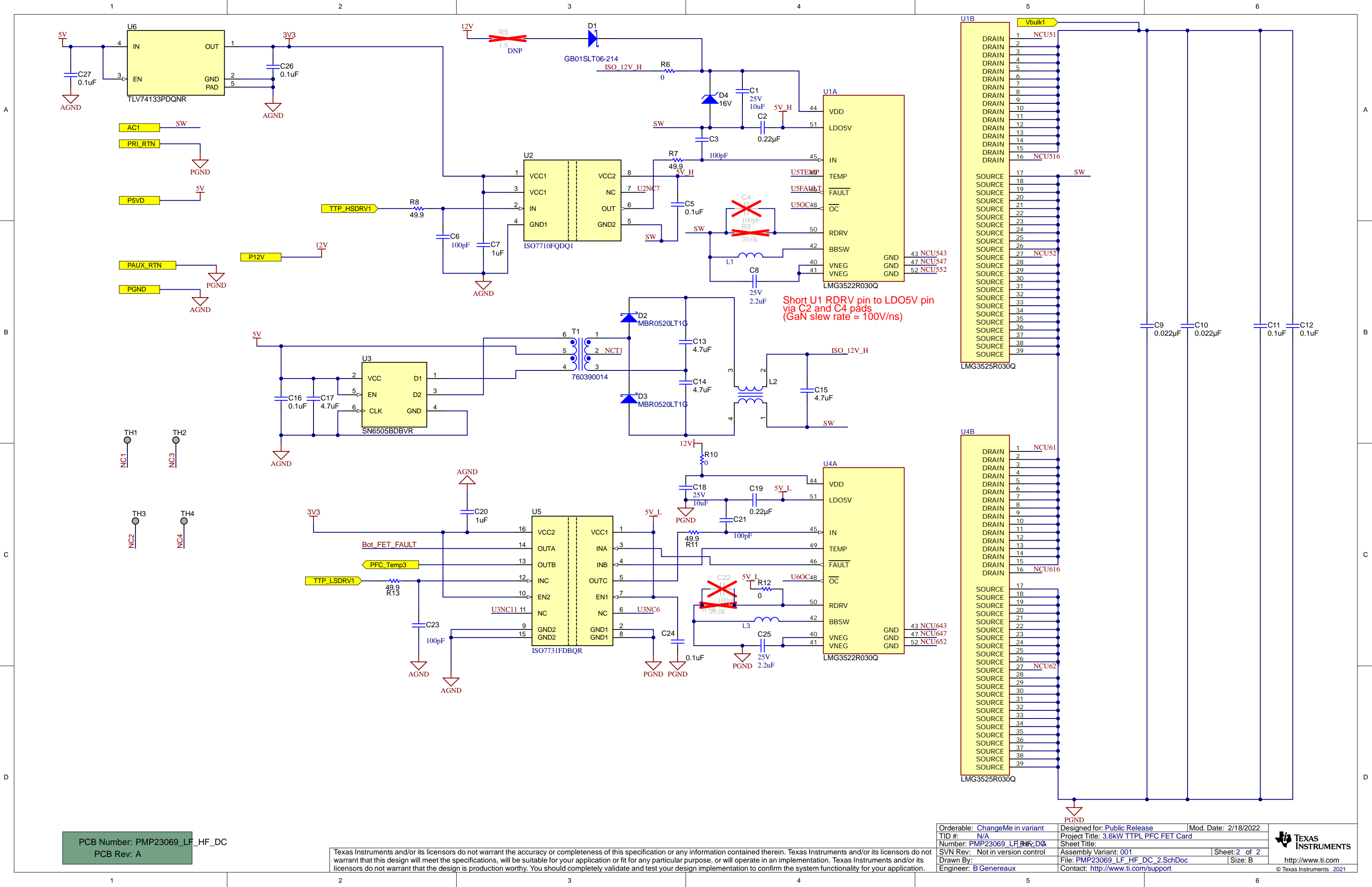
DANGER HIGH VOLTAGE

PCB Number: PMP23069_LF_HF_DC
PCB Rev: A

PCB
LOGO
Texas Instruments

Texas Instruments and/or its licensors do not warrant the accuracy or completeness of this specification or any information contained therein. Texas Instruments and/or its licensors do not warrant that this design will meet the specifications, will be suitable for your application or fit for any particular purpose, or will operate in an implementation. Texas Instruments and/or its licensors do not warrant that the design is production worthy. You should completely validate and test your design implementation to confirm the system functionality for your application.

Orderable: ChangeMe in variant	Designed for: Public Release	Mod. Date: 2/17/2022
TID #: N/A	Project Title: 3.6kW TTPL PFC FET Card	
Number: PMP23069_LF_HF_DC	Rev: 001	Sheet: 1 of 2
SVN Rev: Not in version control	Assembly Variant: 001	Size: B
Drawn By: B Genereaux	File: PMP23069_LF_HF_DC_1.SchDoc	
Engineer: B Genereaux	Contact: http://www.ti.com/support	



PCB Number: PMP23069_LF_HF_DC
PCB Rev: A

Texas Instruments and/or its licensors do not warrant the accuracy or completeness of this specification or any information contained therein. Texas Instruments and/or its licensors do not warrant that this design will meet the specifications, will be suitable for your application or fit for any particular purpose, or will operate in an implementation. Texas Instruments and/or its licensors do not warrant that the design is production worthy. You should completely validate and test your design implementation to confirm the system functionality for your application.

Orderable: ChangeMe in variant	Designed for: Public Release	Mod. Date: 2/18/2022
TID #: N/A	Project Title: 3.6kW TTPL PFC FET Card	
Number: PMP23069_LF_HF_DC	Sheet Title:	
SVN Rev: Not in version control	Assembly Variant: 001	Sheet: 2 of 2
Drawn By:	File: PMP23069_LF_HF_DC_2.SchDoc	Size: B
Engineer: B Genereaux	Contact: http://www.ti.com/support	