

COMPONENTS MARKED 'DNP' SHOULD NOT BE POPULATED.
ASSEMBLY VARIANT: 001

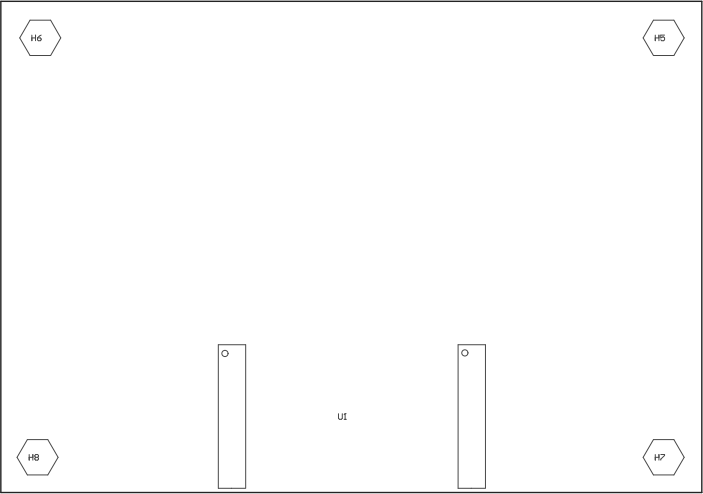
PCB VIEWED FROM TOP SIDE	BOARD #: SAT0103	REV: E1.1	SUN REV:Not In VersionControl
IGNORE -> Top Overlay			
PLOT NAME = Top Assembly Drawing	GENERATED : 20/08/2014 10:18:22 AM	TEXAS INSTRUMENTS	

Z24 ■ These assemblies must comply with workmanship standards IPC-A-610 Class 2, unless otherwise specified.

Z23 ■ These assemblies must be clean and free from flux and all contaminants. Use of no clean flux is not acceptable.

Z22 ■ These assemblies are ESD sensitive, ESD precautions shall be observed.

Z21 ■ Install label in silkscreened box after final wash. Text shall be 8 pt font. Text shall be per the Label Table in the PDF schematic.



COMPONENTS MARKED 'DNP' SHOULD NOT BE POPULATED.
ASSEMBLY VARIANT: 001

PCB VIEWED FROM BOTTOM SIDE	BOARD #: SAT0103	REV: E1.1	SUN REV:Not In VersionControl
IGNORE ->			
PLOT NAME = Bottom Assembly Drawing	GENERATED	: 20/08/2014 10:18:23 AM	TEXAS INSTRUMENTS