

1	2	3	4	5	6	
A	<div>Page 2Block Diagram</div> <div>Page 3Block Diagram</div> <div>Page 4BINARY INPUT+SIGNAL CONDITIONING</div> <div>Page 5POWER SUPPLY</div> <div>Page 6POWER SUPPLY_ISO</div> <div>Page 7ADC+ISOLATOR</div> <div>Page 8Analog Comparators + Reference</div> <div>Page 9Status Indication Inputs</div> <div>Page 10I\O EXPANDER+ISOLATOR</div> <div>Page 11Hardware - MIscellaneous</div>					A
B						B
C						C
D						D

Revision History	
Revision	Notes

Orderable: NA

TID #: 00420

Number: TIDA-00420_ADC_BIM-E2

SVN Rev: Not in version control

Drawn By: Sreenivasa

Engineer: SREENIVASA KALLIKUPPA

Designed for: Public Release

Project Title:

Sheet Title: Index Page

Assembly Variant: 001

File: TIDA-00420_ADC_BIM-E2_Index Page.SchDoc

Contact:

Mod. Date: 3/3/2021

Sheet: 1 of 11

Size: B

TEXASINSTRUMENTS

http://www.ti.com

© Texas Instruments 2021

1

2

3

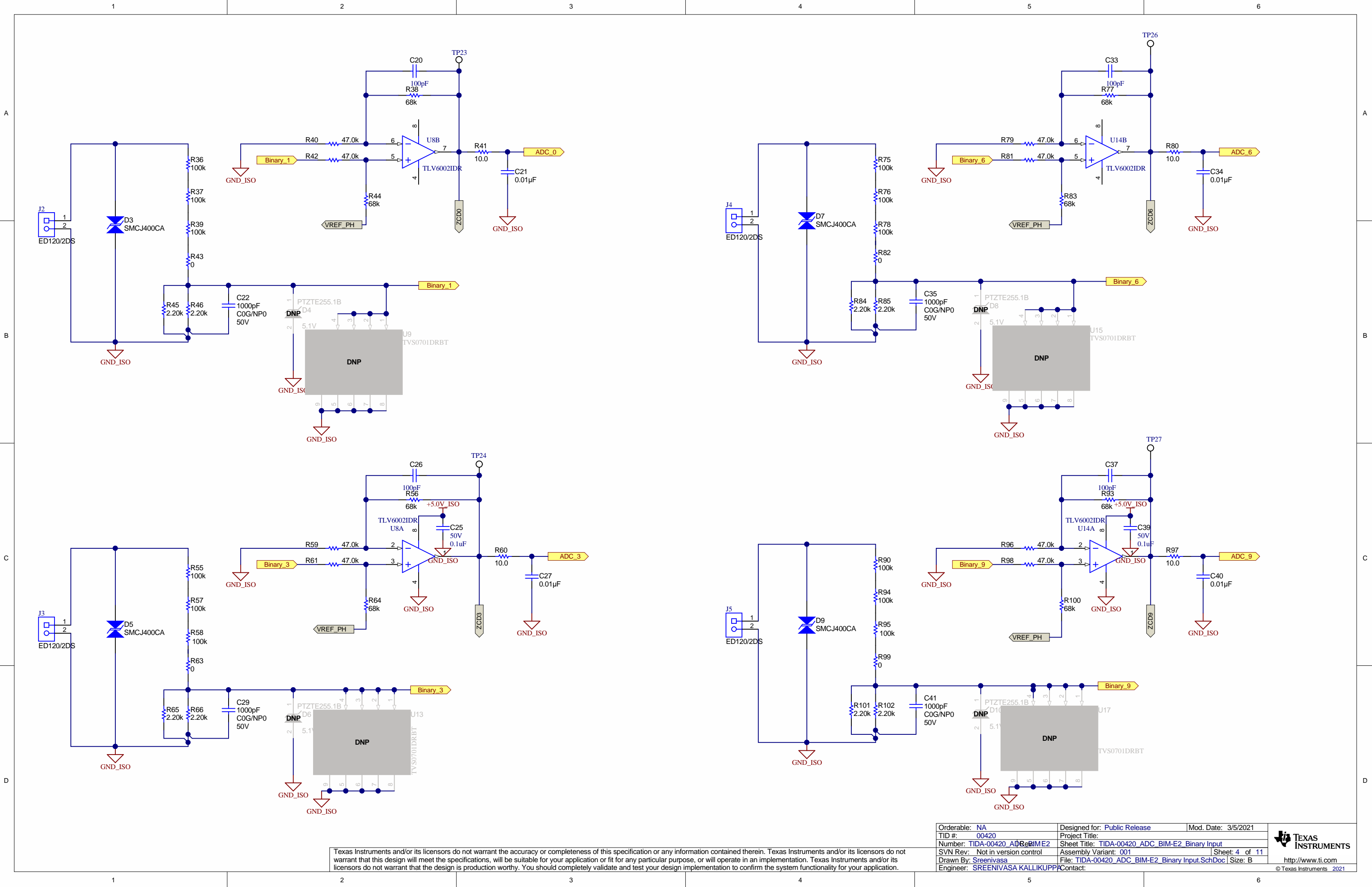
4

5

6

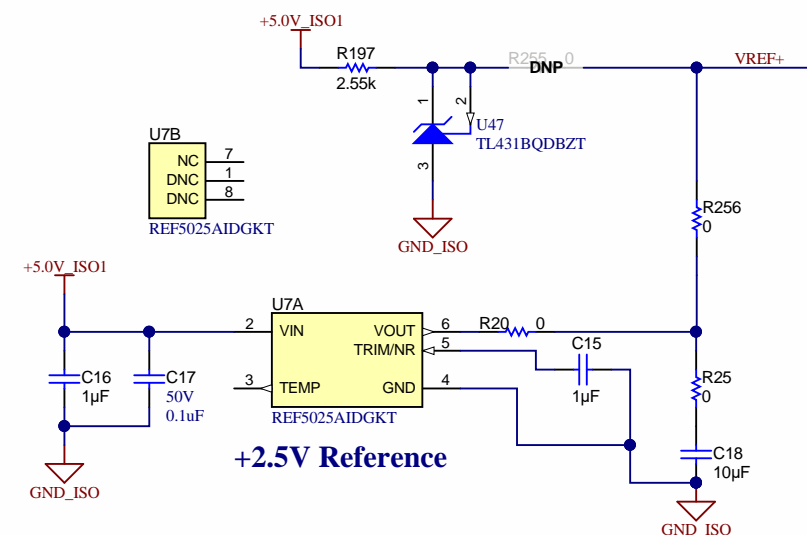
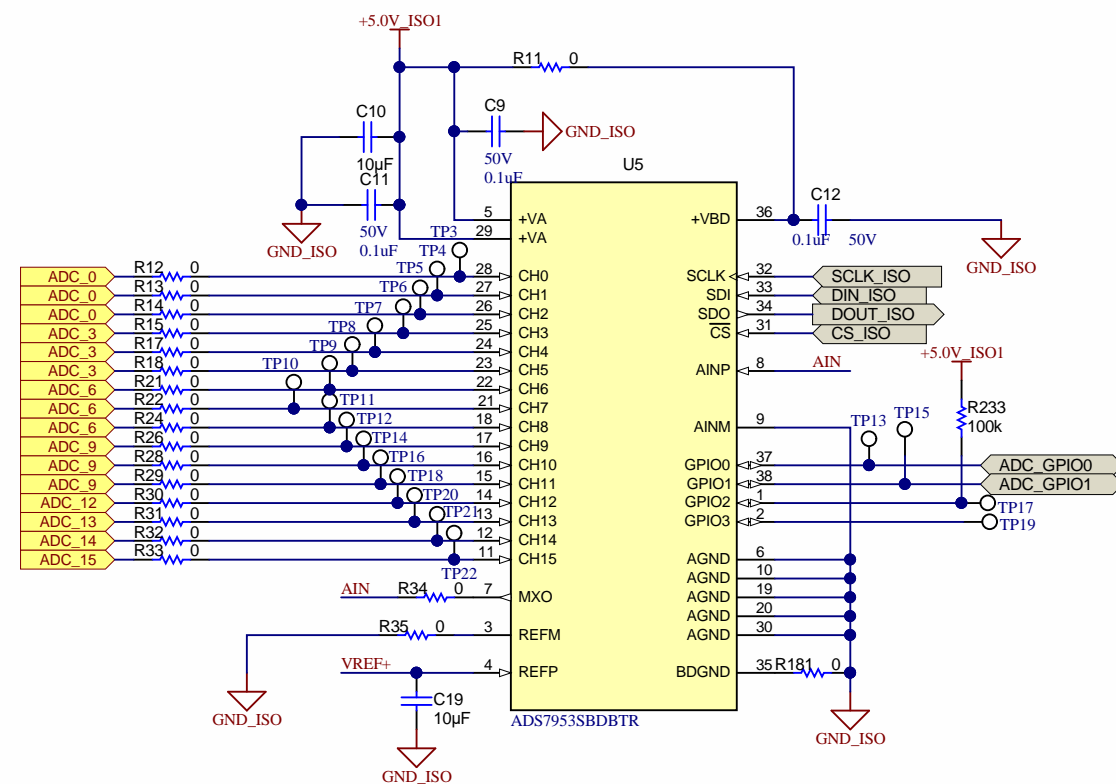
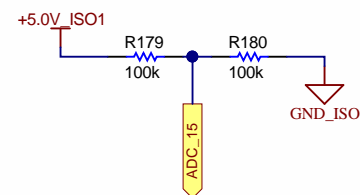
Texas Instruments and/or its licensors do not warrant the accuracy or completeness of this specification or any information contained therein. Texas Instruments and/or its licensors do not warrant that this design will meet the specifications, will be suitable for your application or fit for any particular purpose, or will operate in an implementation. Texas Instruments and/or its licensors do not warrant that the design is production worthy. You should completely validate and test your design implementation to confirm the system functionality for your application.

Revision History	
Revision	Notes

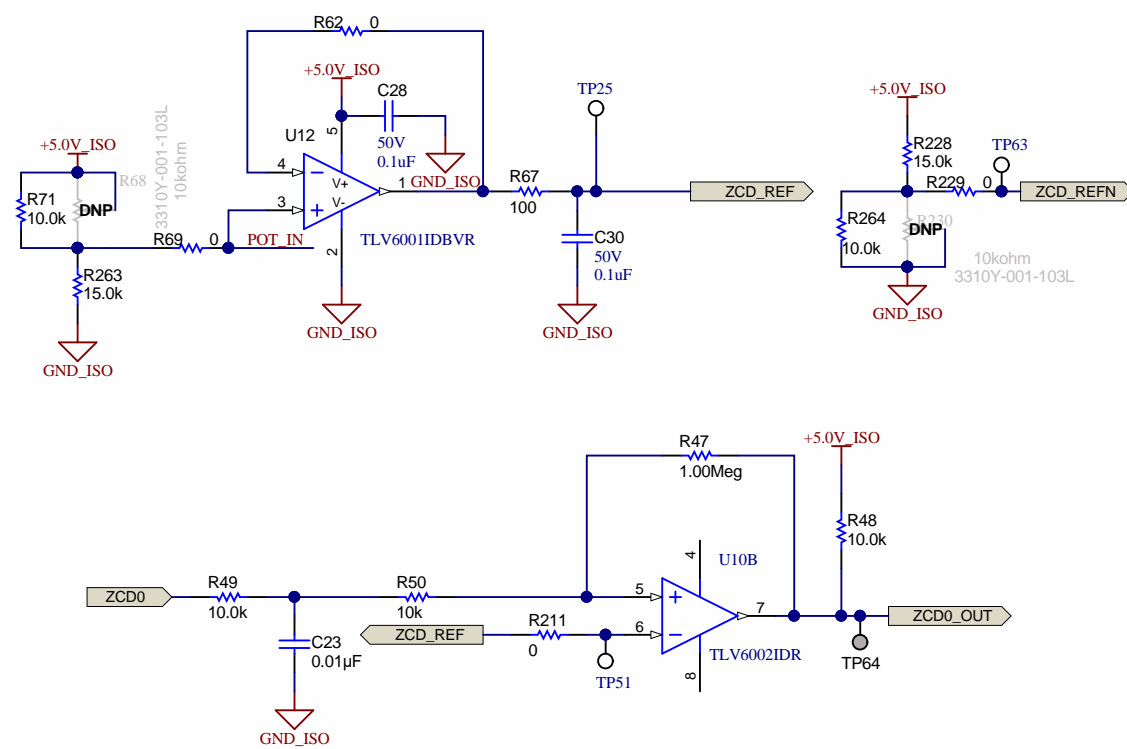
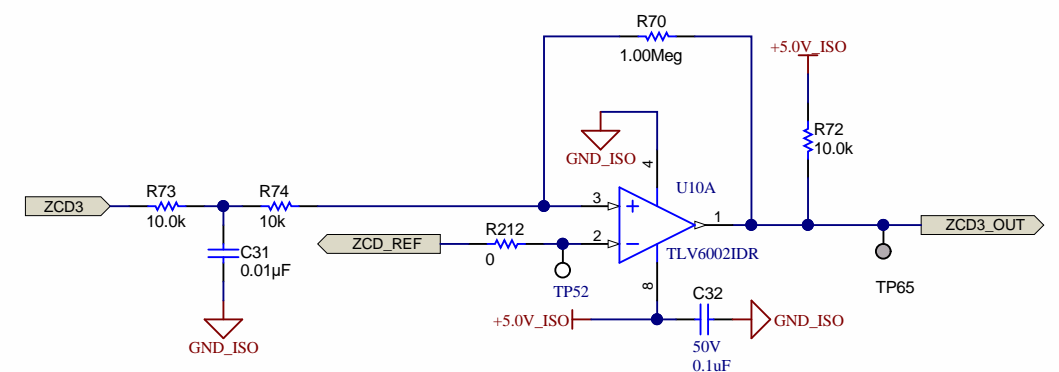
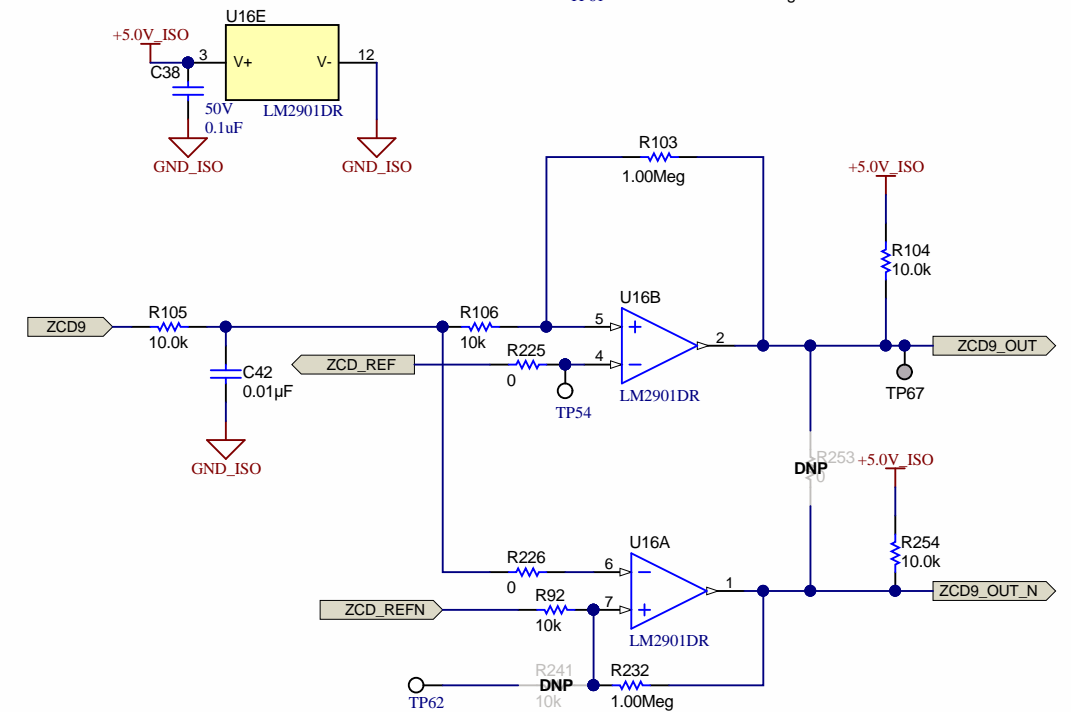
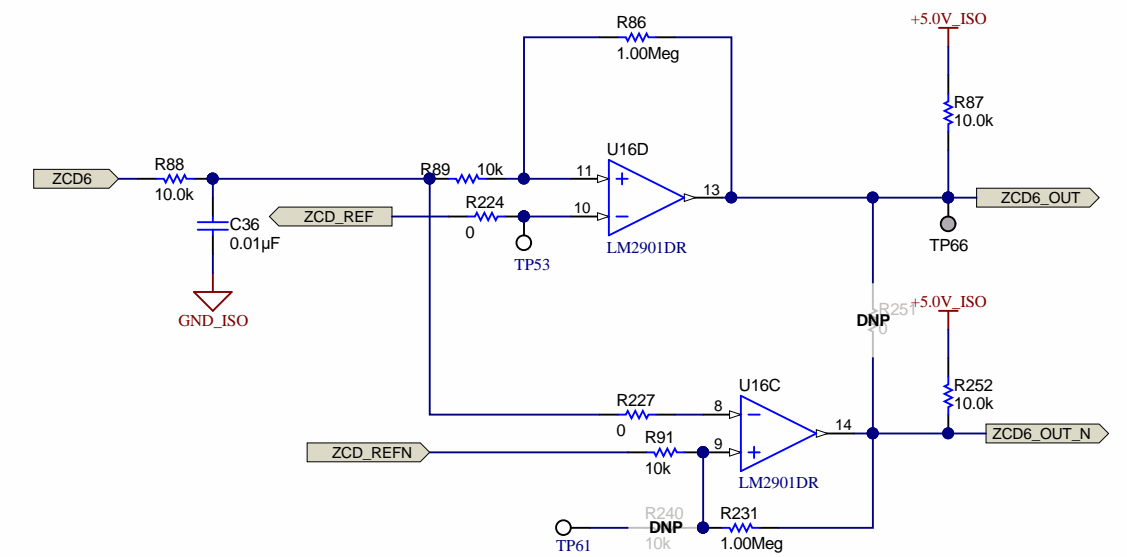
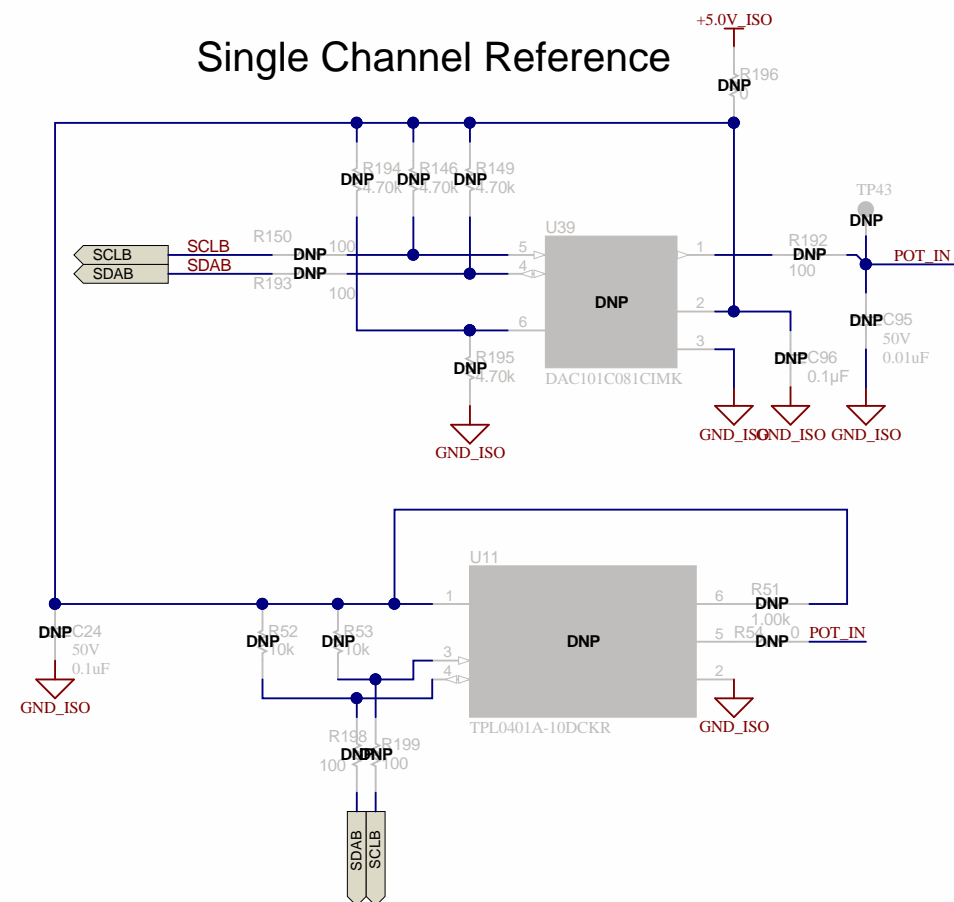


Texas Instruments and/or its licensors do not warrant the accuracy or completeness of this specification or any information contained therein. Texas Instruments and/or its licensors do not warrant that this design will meet the specifications, will be suitable for your application or fit for any particular purpose, or will operate in an implementation. Texas Instruments and/or its licensors do not warrant that the design is production worthy. You should completely validate and test your design implementation to confirm the system functionality for your application.

Orderable: NA	Designed for: Public Release	Mod. Date: 3/5/2021
TID #: 00420	Project Title:	
Number: TIDA-00420_ADR-BIM-E2	Sheet Title: TIDA-00420_ADC_BIM-E2_Binary Input	
SVN Rev: Not in version control	Assembly Variant: 001	Sheet: 4 of 11
Drawn By: Sreenivasa	File: TIDA-00420_ADC_BIM-E2_Binary Input.SchDoc	Size: B
Engineer: SREENIVASA KALLIKUPPA	Contact:	



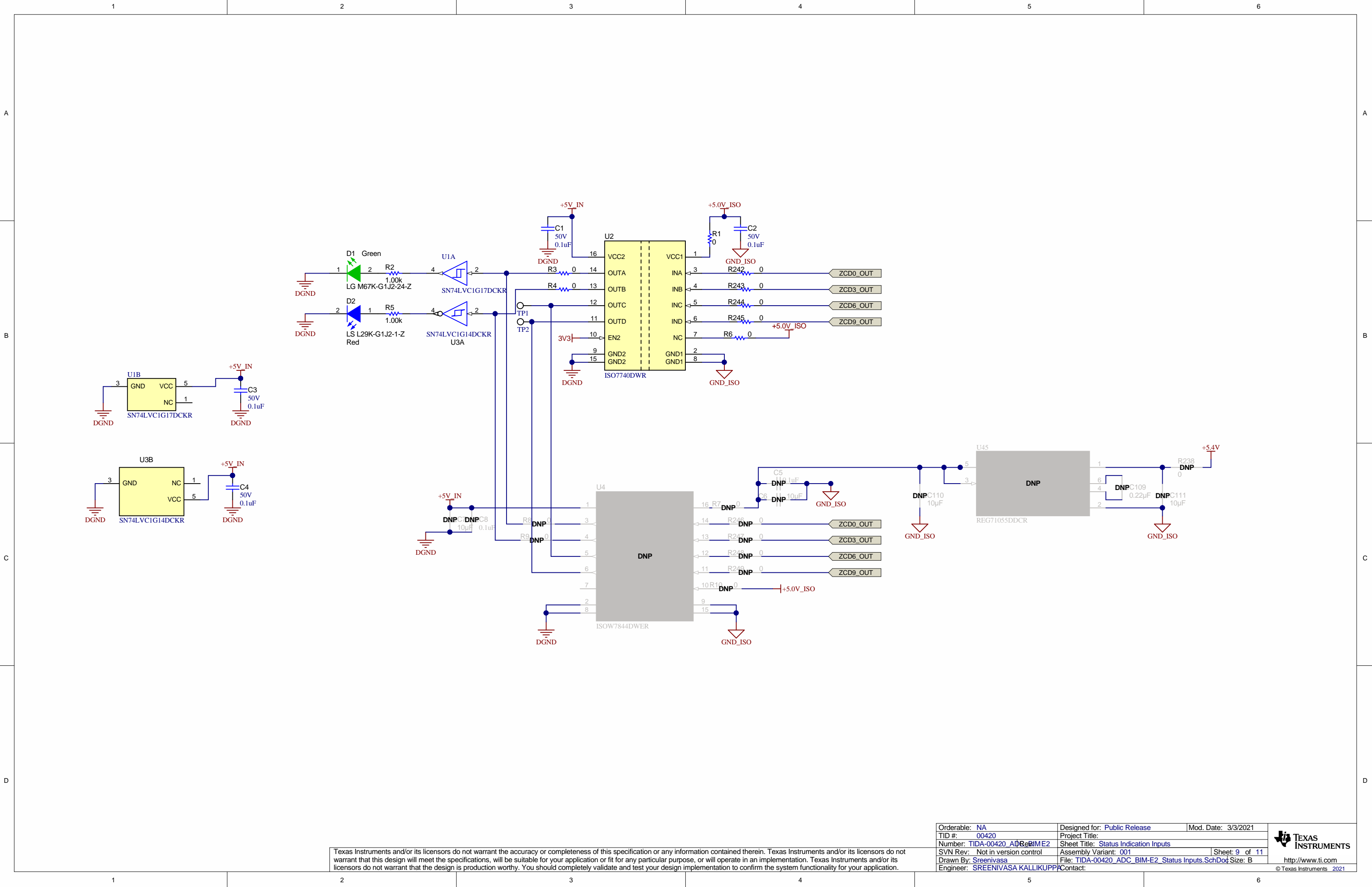
Single Channel Reference



Texas Instruments and/or its licensors do not warrant the accuracy or completeness of this specification or any information contained therein. Texas Instruments and/or its licensors do not warrant that this design will meet the specifications, will be suitable for your application or fit for any particular purpose, or will operate in an implementation. Texas Instruments and/or its licensors do not warrant that the design is production worthy. You should completely validate and test your design implementation to confirm the system functionality for your application.

Orderable: NA	Designed for: Public Release	Mod. Date: 3/3/2021
TID #: 00420	Project Title:	
Number: TIDA-00420_ADC_BIM-E2	Sheet Title: Analog Comparators + Reference	
SVN Rev: Not in version control	Assembly Variant: 001	Sheet: 8 of 11
Drawn By: Sreenivasa	File: TIDA-00420_ADC_BIM-E2_Comparators.SchDoc	Size: B
Engineer: REENIVASA KALLIKUPPA	Contact:	





Texas Instruments and/or its licensors do not warrant the accuracy or completeness of this specification or any information contained therein. Texas Instruments and/or its licensors do not warrant that this design will meet the specifications, will be suitable for your application or fit for any particular purpose, or will operate in an implementation. Texas Instruments and/or its licensors do not warrant that the design is production worthy. You should completely validate and test your design implementation to confirm the system functionality for your application.

Orderable: NA	Designed for: Public Release	Mod. Date: 3/3/2021
TID #: 00420	Project Title:	
Number: TIDA-00420_ADC_BIM-E2	Sheet Title: Status Indication Inputs	
SVN Rev: Not in version control	Assembly Variant: 001	Sheet: 9 of 11
Drawn By: Sreenivasa	File: TIDA-00420_ADC_BIM-E2_Status Inputs.SchDoc	Size: B
Engineer: SREENIVASA KALLIKUPPA	Contact:	

