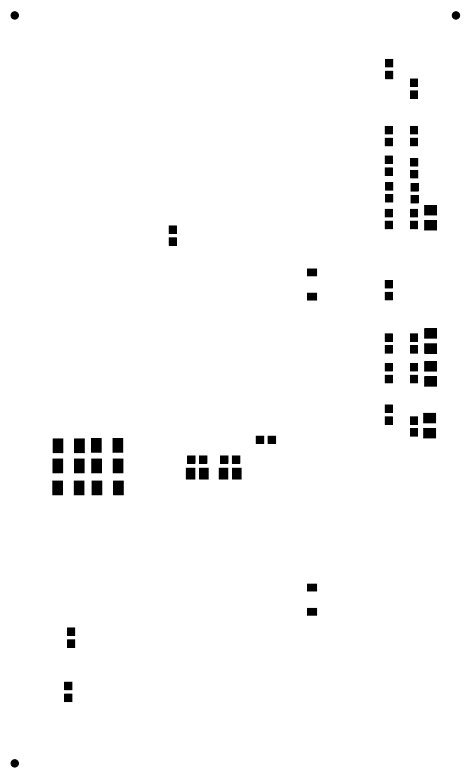


ALL ARTWORK VIEWED FROM TOP SIDE	BOARD #: TIDA-00316	REV: E2	SUN REV: Not In VersionControl
LAYER NAME = Top Paste			
TIDA-00316_E2.GTP	GENERATED : 6/12/2015	4:11:17 PM	TEXAS INSTRUMENTS

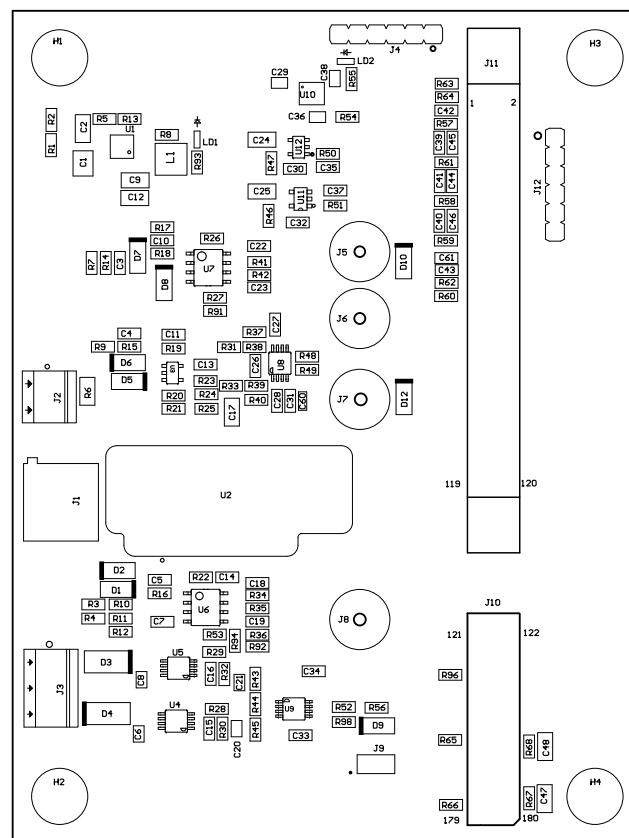


ALL ARTWORK VIEWED FROM TOP SIDE	BOARD #: TIDA-00316	REV: E2	SUN REV: Not In VersionControl
LAYER NAME = Bottom Paste			
TIDA-00316_E2.GBP	GENERATED : 6/12/2015 4:11:17 PM	TEXAS INSTRUMENTS	

Z21 ■ These assemblies are ESD sensitive, ESD precautions shall be observed.

Z22 ■ These assemblies must be clean and free from flux and all contaminants. Use of no clean flux is not acceptable.

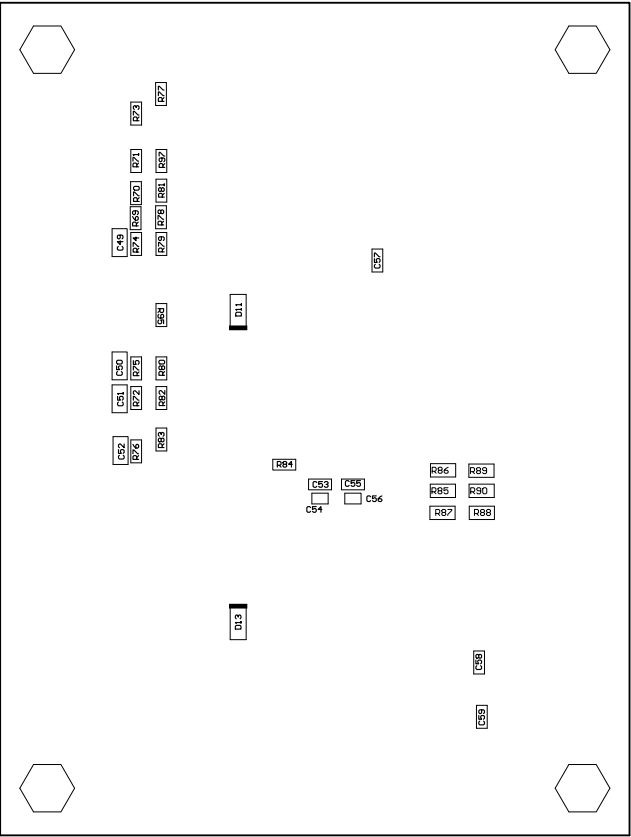
Z23 ■ These assemblies must comply with workmanship standards IPC-A-610 Class 2, unless otherwise specified.



COMPONENTS MARKED 'DNP' SHOULD NOT BE POPULATED.

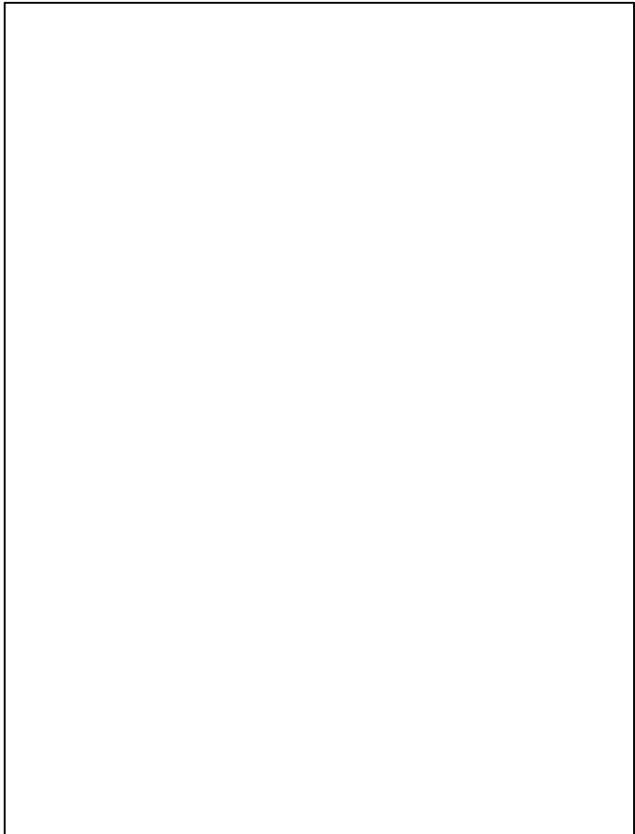
ASSEMBLY VARIANT: [No Variations]

ALL ARTWORK VIEWED FROM TOP SIDE	BOARD #:	TIDA-00316	REV:	E2	SUN REV:	Not In VersionControl
LAYER NAME =	M5 Assembly Top					
TIDA-00316_E2.GHS	GENERATED	:	6/12/2015	4:12:11 PM	TEXAS INSTRUMENTS	



COMPONENTS MARKED 'DNP' SHOULD NOT BE POPULATED.
ASSEMBLY VARIANT: [No Variations]

PCB VIEWED FROM BOTTOM SIDE	BOARD #: TIDA-00316	REV: E2	SUN REV:
LAYER NAME = M6 Assembly Bottom	IGNORE ->		
PLOT NAME = TIDA-00316_E2.GP6	GENERATED : 6/12/2015	4:52:45 PM	



ALL ARTWORK VIEWED FROM TOP SIDE	BOARD #: TIDA-00316	REV: E2	SUN REV: Not In VersionControl
LAYER NAME = M1 Board Outline			
TIDA-00316_E2.GM1	GENERATED	: 6/12/2015 4:11:17 PM	TEXAS INSTRUMENTS