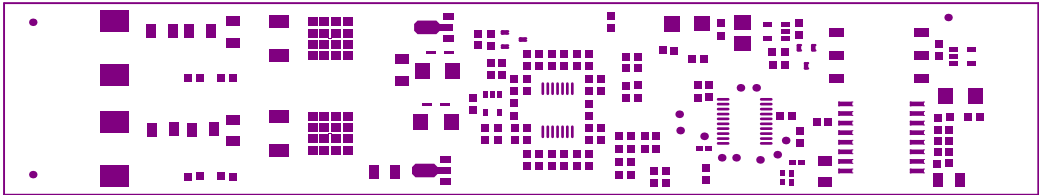
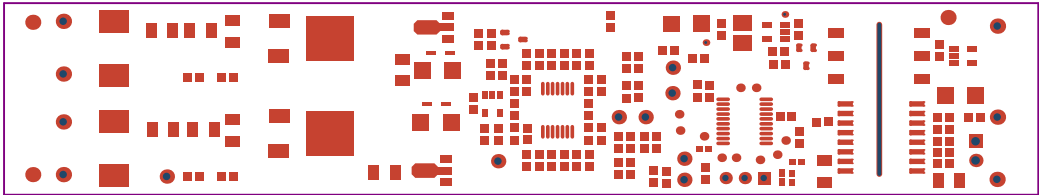


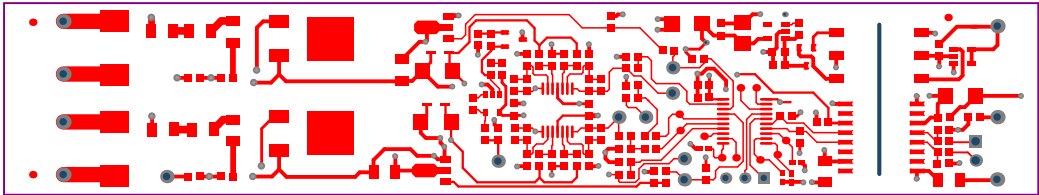
ALL ARTWORK VIEWED FROM TOP SIDE	BOARD #: TIDA-00809-RI	REV: E1	SUN REV: Not In VersionControl
LAYER NAME = Top Overlay	TID #: TIDA-00809-RI		
PLOT NAME = Top Overlay	GENERATED : 7/1/2016	10:50:16 AM	TEXAS INSTRUMENTS



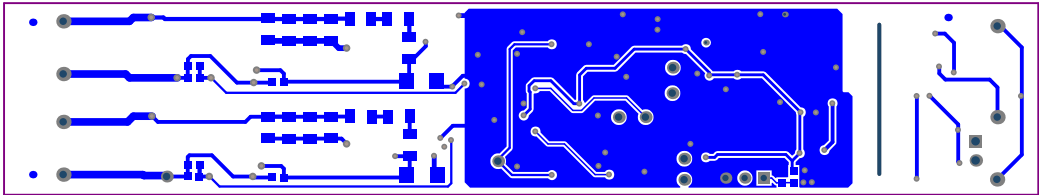
ALL ARTWORK VIEWED FROM TOP SIDE	BOARD #: TIDA-00809-RI	REV: E1	SUN REV: Not In VersionControl
LAYER NAME = Top Paste	TID #: TIDA-00809-RI		
PLOT NAME = Top paste	GENERATED : 7/1/2016 10:50:16 AM	TEXAS INSTRUMENTS	



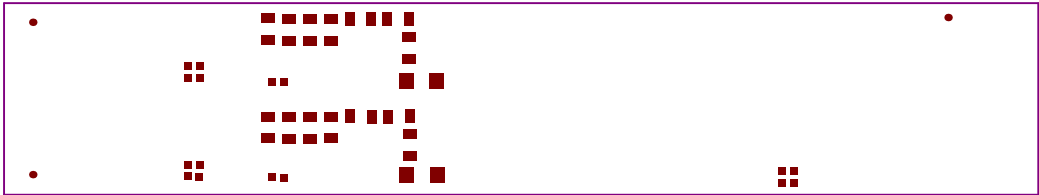
ALL ARTWORK VIEWED FROM TOP SIDE	BOARD #: TIDA-00809-RI	REV: E1	SUN REV: Not In VersionControl
LAYER NAME = Top Solder	TID #: TIDA-00809-RI		
PLOT NAME = Top Solder Mask	GENERATED : 7/1/2016	10:50:16 AM	TEXAS INSTRUMENTS



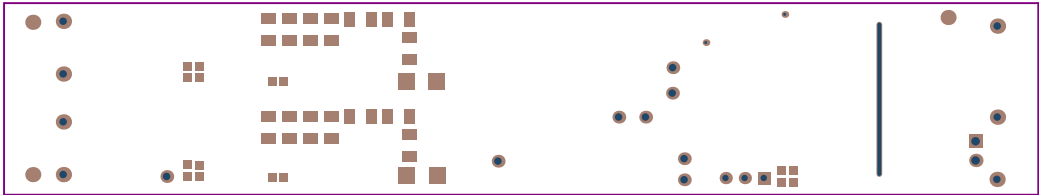
ALL ARTWORK VIEWED FROM TOP SIDE	BOARD #: TIDA-00809-RI	REV: E1	SUN REV: Not In VersionControl
LAYER NAME = Top Layer	TID #: TIDA-00809-RI		
PLOT NAME = Top Layer	GENERATED : 7/1/2016	10:50:16 AM	TEXAS INSTRUMENTS



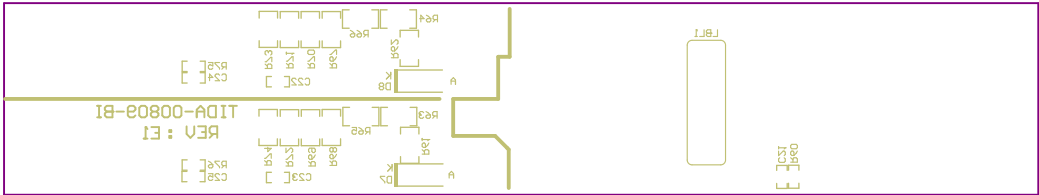
ALL ARTWORK VIEWED FROM TOP SIDE	BOARD #: TIDA-00809-RI	REV: E1	SUN REV: Not In VersionControl
LAYER NAME = Bottom Layer	TID #: TIDA-00809-RI		
PLOT NAME = Bottom Layer	GENERATED : 7/1/2016 10:50:16 AM	TEXAS INSTRUMENTS	



ALL ARTWORK VIEWED FROM TOP SIDE	BOARD #: TIDA-00809-RI	REV: E1	SUN REV: Not In VersionControl
LAYER NAME = Bottom Paste	TID #: TIDA-00809-RI		
PLOT NAME = Bottom Paste	GENERATED : 7/1/2016 10:50:16 AM		TEXAS INSTRUMENTS



ALL ARTWORK VIEWED FROM TOP SIDE	BOARD #: TIDA-00809-RI	REV: E1	SUN REV: Not In VersionControl
LAYER NAME = Bottom Solder	TID #: TIDA-00809-RI		
PLOT NAME = Bottom Solder Mask	GENERATED : 7/1/2016	10:50:16 AM	TEXAS INSTRUMENTS

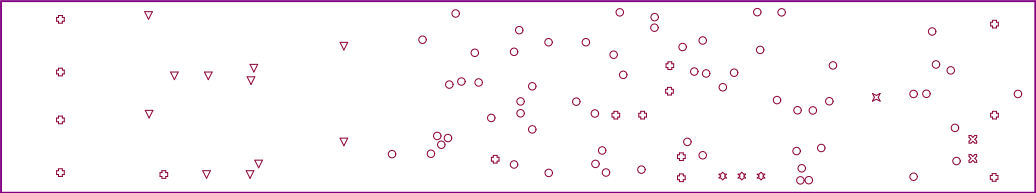


ALL ARTWORK VIEWED FROM TOP SIDE	BOARD #: TIDA-00809-RI	REV: E1	SUN REV: Not In VersionControl
LAYER NAME = Bottom Overlay	TID #: TIDA-00809-RI		
PLOT NAME = Bottom Overlay	GENERATED : 7/1/2016	10:50:16 AM	TEXAS INSTRUMENTS

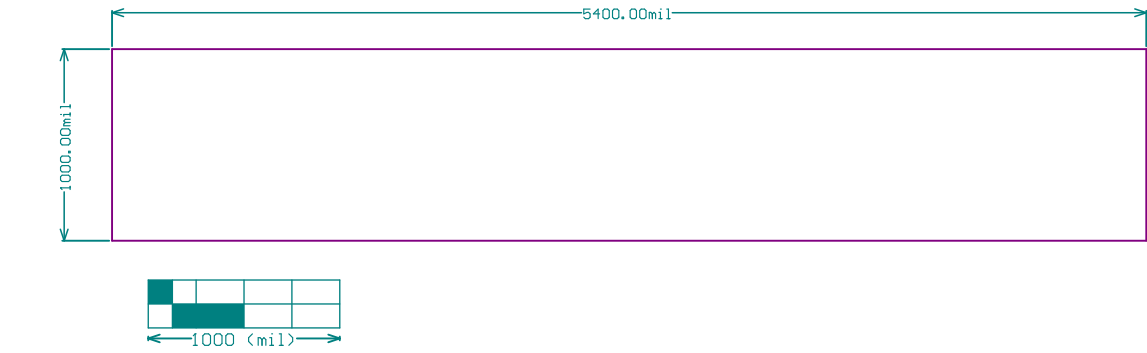
Symbol	Hit Count	Tool Size	Physical Length	Rout Path Length	Plated	Hole Type
○	63	16mil (0.406mm)			PTH	Round
▽	11	20mil (0.508mm)			PTH	Round
✱	3	33.465mil (0.85mm)			PTH	Round
⊗	15	40mil (1.016mm)			PTH	Round
⊗	2	45.276mil (1.15mm)			PTH	Round
⌘	1	20mil (0.508mm)	800mil (20.32mm)	780mil (19.812mm)	NPTH	Slot
	95 Total					

Slot definitions : Rout Path Length = Calculated from tool start centre position to tool end centre position.
Physical Length = Rout Path Length + Tool Size = Slot length as defined in the PCB layout

Drill Table
FOR 16MIL DRILL +0/-16MIL
FOR 20MIL DRILL +0/-20MIL
FOR PTH DRILL +/-3MIL
FOR NPTH DRILL +/-2MIL



ALL ARTWORK VIEWED FROM TOP SIDE	BOARD #: TIDA-00809-RI	REV: E1	SUN REV: Not In VersionControl
LAYER NAME = Drill Drawing	TID #: TIDA-00809-RI		
PLOT NAME = Drill Drawing	GENERATED : 7/1/2016	10:50:16 AM	TEXAS INSTRUMENTS



ALL ARTWORK VIEWED FROM TOP SIDE	BOARD #: TIDA-00809-RI	REV: E1	SUN REV: Not In VersionControl
LAYER NAME = MI Board Outline	TID #: TIDA-00809-RI		
PLOT NAME = Board Dimensions	GENERATED : 7/1/2016 10:50:17 AM	TEXAS INSTRUMENTS	