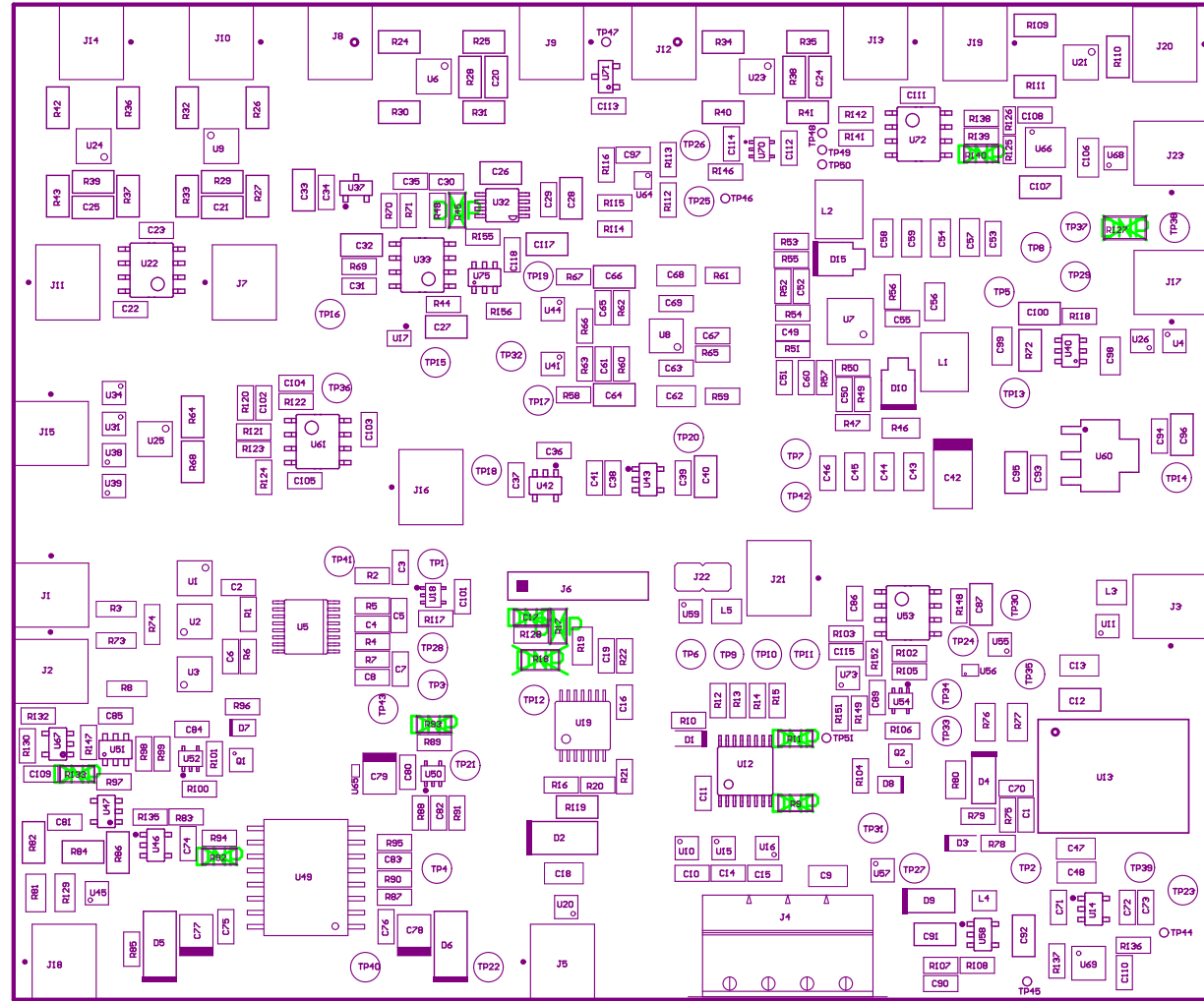


- ZZ1 ■ Install label in silkscreened box after final wash. Text shall be 8 pt font. Text shall be per the Label Table in the PDF schematic.
- ZZ2 ■ These assemblies are ESD sensitive, ESD precautions shall be observed.
- ZZ3 ■ These assemblies must be clean and free from flux and all contaminants. Use of no clean flux is not acceptable.
- ZZ4 ■ These assemblies must comply with workmanship standards IPC-A-610 Class 2, unless otherwise specified.

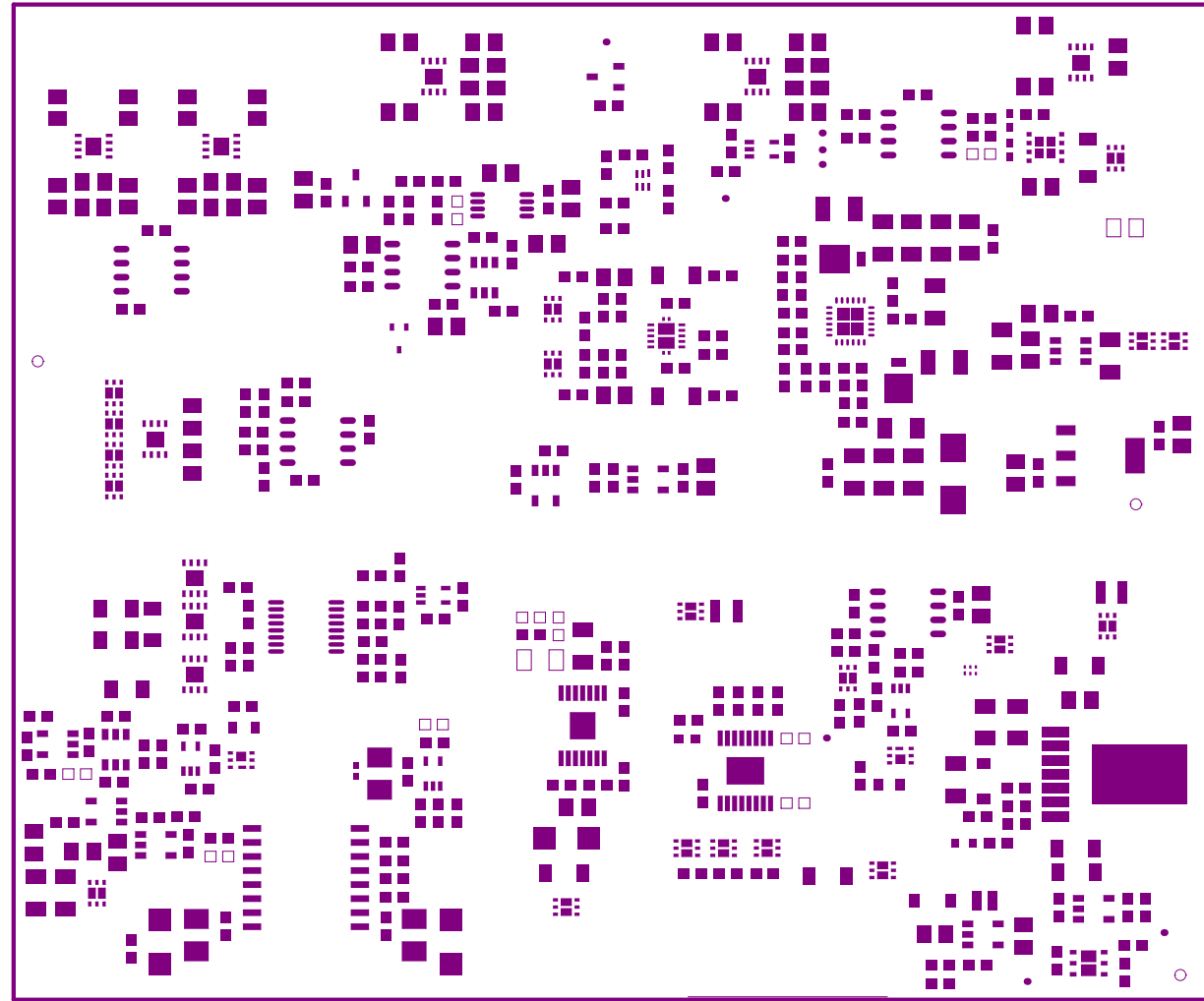


COMPONENTS MARKED 'DNP' SHOULD NOT BE POPULATED.

ASSEMBLY VARIANT:

001

PCB VIEWED FROM TOP SIDE	BOARD #:	TIDA-010008_10-Power+protection_BOARD	REV:	E2	SUN REV:	Not In VersionControl
LAYER NAME =	TID #:	010008				
PLOT NAME =	GENERATED :	4/29/2019	3:10:34 PM	TEXAS INSTRUMENTS		



Top Paste

